

## Actinin-Alpha3 Polyclonal Antibody

### Description

<b>Product type</b>	Primary Antibody
<b>Code</b>	BT-AP00218
<b>Host</b>	Rabbit
<b>Isotype</b>	IgG
<b>Size</b>	20ul, 50ul, 100ul
<b>Immunogen</b>	The antiserum was produced against synthesized peptide derived from human ACTN3. AA range:1-50
<b>Mol wt</b>	103294
<b>Species reactivity</b>	Human, Mouse, Rat
<b>Clonality</b>	Polyclonal
<b>Recommended application</b>	WB, IF, ELISA
<b>Concentration</b>	1 mg/ml
<b>Full name</b>	Actinin-alpha3 Antibody
<b>Synonyms</b>	ACTN3; Alpha-actinin-3; Alpha-actinin skeletal muscle isoform 3; F-actin cross-linking protein

**This product is for research use only, not for use in human, therapeutic or diagnostic procedure.**

### Background

ACTN3 encodes a member of the alpha-actin binding protein gene family. Actinin alpha 3 (gene/pseudogene) is primarily expressed in skeletal muscle and functions as a structural component of sarcomeric Z line. This protein is involved in crosslinking actin containing thin filaments. An allelic polymorphism in this gene results in both coding and non-coding variants; the reference genome represents the coding allele. The non-functional allele of ACTN3 is associated with elite athlete status.

### Recommended Dilution

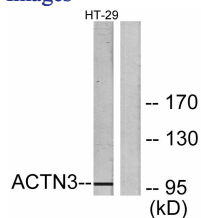
WB: 1: 500 - 1: 2000

IF: 1: 200 - 1: 1000

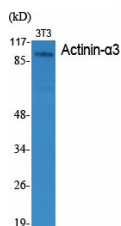
ELISA: 1: 20000

Not yet tested in other applications.

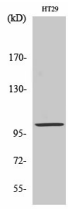
### Images



Western blot analysis of lysates from HT-29 cells, using ACTN3 Antibody. The lane on the right is blocked with the synthesized peptide.



Western Blot analysis of various cells using Actinin- $\alpha$ 3 Polyclonal Antibody



Western Blot analysis of HT29 cells using Actinin- $\alpha$ 3 Polyclonal Antibody

### Storage

-20°C for one year

501 Changsheng S Rd, Nanhu Dist, Jiaxing, Zhejiang, China

Tel: 86 21 31007137 | E-mail: [save@bt-laboratory.com](mailto:save@bt-laboratory.com) | [www.bt-laboratory.com](http://www.bt-laboratory.com)