

Actin-Alpha/Gamma Polyclonal Antibody

Description

Product type	Primary Antibody
Code	BT-AP00220
Host	Rabbit
Isotype	IgG
Size	20ul, 50ul, 100ul
Immunogen	The antiserum was produced against synthesized peptide derived from human Actin. AA range:21-70
Mol wt	41737/41793
Species reactivity	Human, Mouse, Rat
Clonality	Polyclonal
Recommended application	WB, IHC-p, IF, ELISA
Concentration	1 mg/ml
Full name	Actin-alpha/gamma Antibody
Synonyms	ACTC1; ACTC; Actin; alpha cardiac muscle 1; Alpha-cardiac actin; ACTG1; ACTB; ACTG; Actin, cytoplasmic 2; Gamma-actin; ACTG2; ACTA3; ACTL3; ACTSG; Actin, gamma-enteric smooth muscle; Alpha-actin-3; G

This product is for research use only, not for use in human, therapeutic or diagnostic procedure.

Background

The product encoded by ACTA1 (actin, alpha 1, skeletal muscle) belongs to the actin family of proteins, which are highly conserved proteins that play a role in cell motility, structure and integrity. Alpha, beta and gamma actin isoforms have been identified, with alpha actins being a major constituent of the contractile apparatus, while beta and gamma actins are involved in the regulation of cell motility. This actin is an alpha actin that is found in skeletal muscle. Mutations in ACTA1 cause nemaline myopathy type 3, congenital myopathy with excess of thin myofilaments, congenital myopathy with cores, and congenital myopathy with fiber-type disproportion, diseases that lead to muscle fiber defects.

Recommended Dilution

WB: 1: 500 - 1: 2000

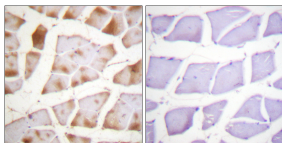
IHC: 1: 100 - 1: 300

IF: 1: 200 - 1: 1000

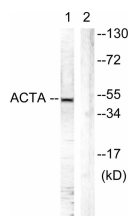
ELISA: 1: 10000

Not yet tested in other applications.

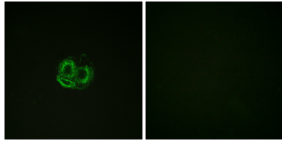
Images



Immunohistochemistry analysis of paraffin-embedded human skeletal muscle tissue, using Actin-pan Antibody. The picture on the right is blocked with the synthesized peptide.



Western blot analysis of lysates from mouse brain, using Actin-pan Antibody. The lane on the right is blocked with the synthesized peptide.



Immunofluorescence analysis of HUVEC cells, using Actin-pan Antibody. The picture on the right is blocked with the synthesized peptide.

Storage

-20°C for one year

501 Changsheng S Rd, Nanhu Dist, Jiaxing, Zhejiang, China

Tel: 86 21 31007137 | E-mail: save@bt-laboratory.com | www.bt-laboratory.com