

Actin Kappa Polyclonal Antibody

Description

Product type	Primary Antibody
Code	BT-AP00221
Host	Rabbit
Isotype	IgG
Size	20ul, 50ul, 100ul
Immunogen	The antiserum was produced against synthesized peptide derived from human ACTBL2. AA range:81-130
Mol wt	42003
Species reactivity	Human, Mouse
Clonality	Polyclonal
Recommended application	WB, ELISA
Concentration	1 mg/ml
Full name	Actin-kappa Antibody
Synonyms	ACTBL2; Beta-actin-like protein 2; Kappa-actin

This product is for research use only, not for use in human, therapeutic or diagnostic procedure.

Background

Actins are highly conserved proteins that are involved in various types of cell motility and are ubiquitously expressed in all eukaryotic cells. ACTBL2 (Actin, Beta-Like 2) is a Protein Coding gene. An important paralog of this gene is ACTRT1.

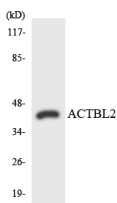
Recommended Dilution

WB: 1: 500 - 1: 2000

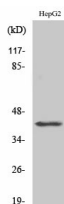
ELISA: 1: 20000

Not yet tested in other applications.

Images



Western blot analysis of the lysates from HUVEC cells using ACTBL2 antibody.



Western Blot analysis of various cells using Actin-κ Polyclonal Antibody

Storage

-20°C for one year