

## ACYP2 Polyclonal Antibody

### Description

<b>Product type</b>	Primary Antibody
<b>Code</b>	BT-AP00228
<b>Host</b>	Rabbit
<b>Isotype</b>	IgG
<b>Size</b>	20ul, 50ul, 100ul
<b>Immunogen</b>	Synthesized peptide derived from ACYP2 . at AA range: 40-120
<b>Mol wt</b>	11140
<b>Species reactivity</b>	Human, Rat
<b>Clonality</b>	Polyclonal
<b>Recommended application</b>	WB, ELISA
<b>Concentration</b>	1 mg/ml
<b>Full name</b>	ACYP2 Antibody
<b>Synonyms</b>	ACYP2; ACYP; Acylphosphatase-2; Acylphosphatase; muscle type isozyme; Acylphosphate phosphohydrolase 2

This product is for research use only, not for use in human, therapeutic or diagnostic procedure.

### Background

Acylphosphatase can hydrolyze the phosphoenzyme intermediate of different membrane pumps, particularly the Ca<sup>2+</sup>/Mg<sup>2+</sup>-ATPase from sarcoplasmic reticulum of skeletal muscle. Two isoenzymes have been isolated, called muscle acylphosphatase and erythrocyte acylphosphatase on the basis of their tissue localization. ACYP2 (acylphosphatase 2) encodes the muscle-type isoform (MT). An increase of the MT isoform is associated with muscle differentiation. Several transcript variants encoding different isoforms have been found for ACYP2.

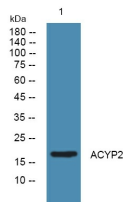
### Recommended Dilution

WB: 1: 500 - 1: 2000

ELISA: 1: 10000

Not yet tested in other applications.

### Images



Western blot analysis of lysates from Jarkat cells, primary antibody was diluted at 1:1000, 4°over night

### Storage

-20°C for one year