

## ADAM32 Polyclonal Antibody

### Description

<b>Product type</b>	Primary Antibody
<b>Code</b>	BT-AP00239
<b>Host</b>	Rabbit
<b>Isotype</b>	IgG
<b>Size</b>	20ul, 50ul, 100ul
<b>Immunogen</b>	Synthesized peptide derived from ADAM32 . at AA range: 460-540
<b>Mol wt</b>	87934
<b>Species reactivity</b>	Human
<b>Clonality</b>	Polyclonal
<b>Recommended application</b>	WB, ELISA
<b>Concentration</b>	1 mg/ml
<b>Full name</b>	ADAM32 Antibody
<b>Synonyms</b>	ADAM32; Disintegrin and metalloproteinase domain-containing protein 32; ADAM 32

This product is for research use only, not for use in human, therapeutic or diagnostic procedure.

### Background

ADAM32 encodes a member of the disintegrin family of membrane-anchored proteins that play a role in diverse biological processes such as brain development, fertilization, tumor development and inflammation. ADAM32 is predominantly expressed in the testis. The encoded protein (ADAM metalloproteinase domain 32) undergoes proteolytic processing to generate a mature polypeptide comprised of an metalloprotease, disintegrin and epidermal growth factor-like domains. ADAM32 is located in a cluster of other disintegrin and metalloproteinase family genes on chromosome 8. Alternative splicing results in multiple transcript variants encoding different isoforms.

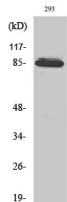
### Recommended Dilution

WB: 1: 500 - 1: 2000

ELISA: 1: 40000

Not yet tested in other applications.

### Images



Western Blot analysis of various cells using ADAM32 Polyclonal Antibody diluted at 1:1000

### Storage

-20°C for one year