

ADCK1 Polyclonal Antibody

Description

Product type	Primary Antibody
Code	BT-AP00253
Host	Rabbit
Isotype	IgG
Size	20ul, 50ul, 100ul
Immunogen	The antiserum was produced against synthesized peptide derived from human ADCK1. AA range:251-300
Mol wt	60577
Species reactivity	Human, Mouse
Clonality	Polyclonal
Recommended application	WB, IHC-p, IF, ELISA
Concentration	1 mg/ml
Full name	ADCK1 Antibody
Synonyms	ADCK1; Uncharacterized aarF domain-containing protein kinase 1

This product is for research use only, not for use in human, therapeutic or diagnostic procedure.

Background

CABC1 (chaperone activity of bc1 complex-like), also known as COQ8 or ADCK3 (aarF domain-containing protein kinase 3) is a 647 amino acid mitochondrial protein that belongs to the ADCK protein kinase. Ubiquitously expressed with higher expression in heart and skeletal muscle, CABC1 is thought to function as a chaperone in the proper assembly of protein complexes found in the respiratory chain. CABC1 expression is induced both in response to DNA damage and by the tumor suppressor p53. When CABC1 expression is inhibited, p53-induced apoptosis is partially suppressed, suggesting a possible role for CABC1 in tumor suppression. Mutations in the gene encoding CABC1 may be implicated in ubiquinone deficiency which can lead to cerebellar ataxia and seizures. Four isoforms of CABC1 exist due to alternative splicing events. Other members of the ADCK protein kinase family include ADCK1, ADCK2, ADCK4 and ADCK5.

Recommended Dilution

WB: 1: 500 - 1: 2000

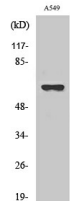
IHC: 1: 100 - 1: 300

IF: 1: 200 - 1: 1000

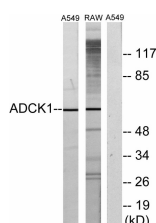
ELISA: 1: 5000

Not yet tested in other applications.

Images



Western Blot analysis of various cells using ADCK1 Polyclonal Antibody



Western blot analysis of lysates from A549 and RAW264.7 cells, using ADCK1 Antibody. The lane on the right is blocked with the synthesized peptide.

Storage

-20°C for one year

501 Changsheng S Rd, Nanhu Dist, Jiaxing, Zhejiang, China

Tel: 86 21 31007137 | E-mail: save@bt-laboratory.com | www.bt-laboratory.com