

ADCK2 Polyclonal Antibody

Description

Product type	Primary Antibody
Code	BT-AP00254
Host	Rabbit
Isotype	IgG
Size	20ul, 50ul, 100ul
Immunogen	The antiserum was produced against synthesized peptide derived from human ADCK2. AA range:241-290
Mol wt	68982
Species reactivity	Human
Clonality	Polyclonal
Recommended application	WB, IHC-p, IF, ELISA
Concentration	1 mg/ml
Full name	ADCK2 Antibody
Synonyms	ADCK2; AARF; Uncharacterized aarF domain-containing protein kinase 2

This product is for research use only, not for use in human, therapeutic or diagnostic procedure.

Background

ADCK2 (aarF domain containing kinase 2), also known as AARF, is a 626 amino acid single-pass membrane protein belonging to the protein kinase superfamily and the ADCK protein kinase family. The ADCK family consists of five paralogs in human (ADCK1-5). Encoded by a gene that maps to human chromosome 7q34, ADCK2 contains one protein kinase domain. ADCK2 participates in ATP and nucleotide binding, transferase functions and protein serine/threonine kinase activities. Expression of ADCK2 inversely correlates with cellular viability, suggesting elevated expression of ADCK2 may be essential for tumour survival. ADCK2 is necessary for cell proliferation of glioblastoma multiforme (GBM), a fatal primary brain tumor containing countless genetic and epigenetic alterations.

Recommended Dilution

WB: 1: 500 - 1: 2000

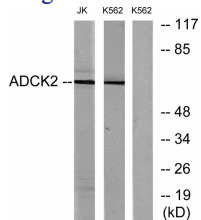
IHC: 1: 100 - 1: 300

IF: 1: 200 - 1: 1000

ELISA: 1: 10000

Not yet tested in other applications.

Images



Western blot analysis of lysates from Jurkat and K562 cells, using ADCK2 Antibody. The lane on the right is blocked with the synthesized peptide.

Storage

-20°C for one year