

Adducin Alpha/Beta Polyclonal Antibody

Description

Product type	Primary Antibody
Code	BT-AP00260
Host	Rabbit
Isotype	IgG
Size	20ul, 50ul, 100ul
Immunogen	The antiserum was produced against synthesized peptide derived from human ADD1. AA range:688-737
Mol wt	80955
Species reactivity	Human, Mouse, Rat
Clonality	Polyclonal
Recommended application	WB, IHC-p, IP, IF, ELISA
Concentration	1 mg/ml
Full name	Adducin alpha/beta Antibody
Synonyms	ADD1; ADDA; Alpha-adducin; Erythrocyte adducin subunit alpha; ADD2; ADDB; Beta-adducin; Erythrocyte adducin subunit beta

This product is for research use only, not for use in human, therapeutic or diagnostic procedure.

Background

Adducins are a family of cytoskeleton proteins encoded by three genes (alpha, beta, gamma). Adducin is a heterodimeric protein that consists of related subunits, which are produced from distinct genes but share a similar structure. Alpha- and beta-adducin include a protease-resistant N-terminal region and a protease-sensitive, hydrophilic C-terminal region. Alpha- and gamma-adducins are ubiquitously expressed. In contrast, beta-adducin is expressed at high levels in brain and hematopoietic tissues. Adducin binds with high affinity to Ca²⁺/calmodulin and is a substrate for protein kinases A and C. Alternative splicing results in multiple variants encoding distinct isoforms; however, not all variants have been fully described.

Recommended Dilution

WB: 1: 500 - 1: 2000

IHC: 1: 100 - 1: 300

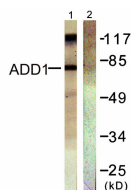
IP: 2 - 5 ug: mg lysate

IF: 1: 200 - 1: 1000

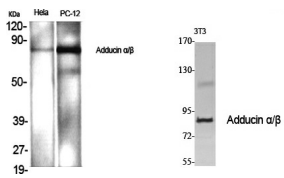
ELISA: 1: 40000

Not yet tested in other applications.

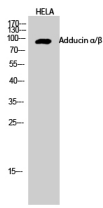
Images



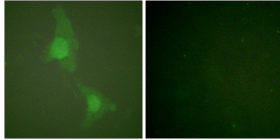
Western blot analysis of lysates from HeLa cells, treated with Forskolin 40nM 30', using ADD1 Antibody. The lane on the right is blocked with the synthesized peptide.



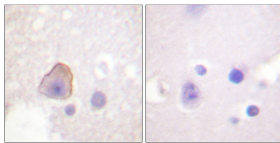
Western Blot analysis of various cells using Adducin α/β Polyclonal Antibody diluted at 1:1000



Western Blot analysis of HELA cells using Adducin α/β Polyclonal Antibody diluted at 1:1000



Immunofluorescence analysis of HeLa cells, using ADD1 Antibody. The picture on the right is blocked with the synthesized peptide.



Immunohistochemistry analysis of paraffin-embedded human brain tissue, using ADD1 Antibody. The picture on the right is blocked with the synthesized peptide.

Storage

-20°C for one year

501 Changsheng S Rd, Nanhu Dist, Jiaxing, Zhejiang, China

Tel: 86 21 31007137 | E-mail: save@bt-laboratory.com | www.bt-laboratory.com