

Adenosine A1-R Polyclonal Antibody

Description

Product type	Primary Antibody
Code	BT-AP00263
Host	Rabbit
Isotype	IgG
Size	20ul, 50ul, 100ul
Immunogen	The antiserum was produced against synthesized peptide derived from human ADORA1. AA range:277-326
Mol wt	36512
Species reactivity	Human, Rat
Clonality	Polyclonal
Recommended application	WB, IF, ELISA
Concentration	1 mg/ml
Full name	Adenosine A1-R Antibody
Synonyms	ADORA1; Adenosine receptor A1

This product is for research use only, not for use in human, therapeutic or diagnostic procedure.

Background

The adenosine A1 receptor encoded by ADORA1 is an adenosine receptor that belongs to the G-protein coupled receptor 1 family. There are 3 types of adenosine receptors, each with a specific pattern of ligand binding and tissue distribution, and together they regulate a diverse set of physiologic functions. The type A1 receptors inhibit adenylyl cyclase, and play a role in the fertilization process. Animal studies also suggest a role for A1 receptors in kidney function and ethanol intoxication. Transcript variants with alternative splicing in the 5' UTR have been found for this gene.

Recommended Dilution

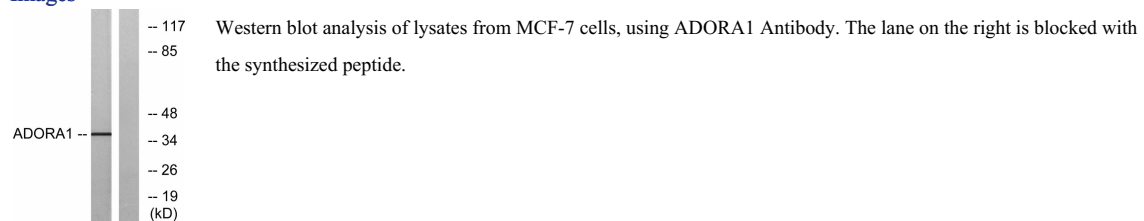
WB: 1: 500 - 1: 2000

IF: 1: 200 - 1: 1000

ELISA: 1: 20000

Not yet tested in other applications.

Images



Storage

-20°C for one year