

Adenosine A2A-R Polyclonal Antibody

Description

Product type	Primary Antibody
Code	BT-AP00265
Host	Rabbit
Isotype	IgG
Size	20ul, 50ul, 100ul
Immunogen	The antiserum was produced against synthesized peptide derived from human ADORA2A. AA range:120-169
Mol wt	44707
Species reactivity	Human
Clonality	Polyclonal
Recommended application	WB, IHC-p, IF, ELISA
Concentration	1 mg/ml
Full name	Adenosine A2A-R Antibody
Synonyms	ADORA2A; ADORA2; Adenosine receptor A2a

This product is for research use only, not for use in human, therapeutic or diagnostic procedure.

Background

ADORA2A encodes a member of the guanine nucleotide-binding protein (G protein)-coupled receptor (GPCR) superfamily, which is subdivided into classes and subtypes. The receptors are seven-pass transmembrane proteins that respond to extracellular cues and activate intracellular signal transduction pathways. Adenosine A2a receptor, an adenosine receptor of A2A subtype, uses adenosine as the preferred endogenous agonist and preferentially interacts with the G(s) and G(olf) family of G proteins to increase intracellular cAMP levels. It plays an important role in many biological functions, such as cardiac rhythm and circulation, cerebral and renal blood flow, immune function, pain regulation, and sleep. It has been implicated in pathophysiological conditions such as inflammatory diseases and neurodegenerative disorders. Alternative splicing results in multiple transcript variants. A read-through transcript composed of the upstream SPECC1L (sperm antigen with calponin homology and coiled-coil domains 1-like) and ADORA2A (adenosine A2a receptor) gene sequence has been identified, but it is thought to be non-coding.

Recommended Dilution

WB: 1: 500 - 1: 2000

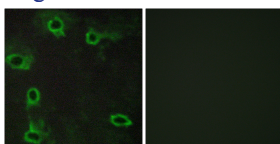
IHC: 1: 100 - 1: 300

IF: 1: 200 - 1: 1000

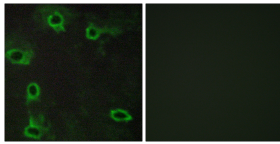
ELISA: 1: 5000

Not yet tested in other applications.

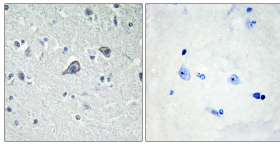
Images



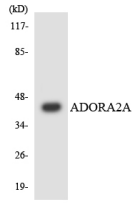
Immunofluorescence analysis of ADORA2A Antibody. The lane on the right is blocked with the ADORA2A peptide.



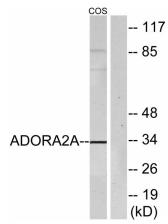
Immunofluorescence analysis of COS7 cells, using ADORA2A Antibody. The picture on the right is blocked with the synthesized peptide.



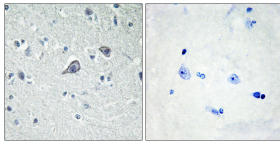
Immunohistochemistry analysis of paraffin-embedded human brain, using ADORA2A Antibody. The lane on the right is blocked with the ADORA2A peptide.



Western blot analysis of the lysates from HepG2 cells using ADORA2A antibody.



Western blot analysis of ADORA2A Antibody. The lane on the right is blocked with the ADORA2A peptide.



Immunohistochemistry analysis of paraffin-embedded human brain tissue, using ADORA2A Antibody. The picture on the right is blocked with the synthesized peptide.

Storage

-20°C for one year

501 Changsheng S Rd, Nanhu Dist, Jiaxing, Zhejiang, China

Tel: 86 21 31007137 | E-mail: save@bt-laboratory.com | www.bt-laboratory.com