

Adenosine A2B-R Polyclonal Antibody

Description

Product type	Primary Antibody
Code	BT-AP00266
Host	Rabbit
Isotype	IgG
Size	20ul, 50ul, 100ul
Immunogen	The antiserum was produced against synthesized peptide derived from human ADORA2B. AA range:231-280
Mol wt	36333
Species reactivity	Human
Clonality	Polyclonal
Recommended application	WB, IF, ELISA
Concentration	1 mg/ml
Full name	Adenosine A2B-R Antibody
Synonyms	ADORA2B; Adenosine receptor A2b

This product is for research use only, not for use in human, therapeutic or diagnostic procedure.

Background

ADORA2B encodes an adenosine receptor that is a member of the G protein-coupled receptor superfamily. This adenosine A2b receptor stimulates adenylate cyclase activity in the presence of adenosine. This protein also interacts with netrin-1, which is involved in axon elongation. The gene is located near the Smith-Magenis syndrome region on chromosome 17.

Recommended Dilution

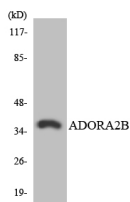
WB: 1: 500 - 1: 2000

IF: 1: 200 - 1: 1000

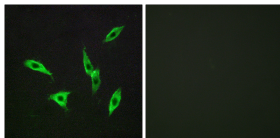
ELISA: 1: 5000

Not yet tested in other applications.

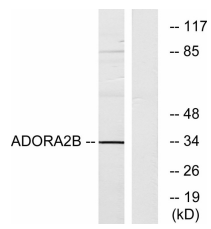
Images



Western blot analysis of the lysates from HT-29 cells using ADORA2B antibody.



Immunofluorescence analysis of LOVO cells, using ADORA2B Antibody. The picture on the right is blocked with the synthesized peptide.



Western blot analysis of lysates from Jurkat cells, using ADORA2B Antibody. The lane on the right is blocked with the synthesized peptide.

Storage

-20°C for one year

501 Changsheng S Rd, Nanhu Dist, Jiaxing, Zhejiang, China

Tel: 86 21 31007137 | E-mail: save@bt-laboratory.com | www.bt-laboratory.com