

Adenosine A3-R Polyclonal Antibody

Description

Product type	Primary Antibody
Code	BT-AP00268
Host	Rabbit
Isotype	IgG
Size	20ul, 50ul, 100ul
Immunogen	The antiserum was produced against synthesized peptide derived from human ADORA3. AA range:269-318
Mol wt	36185
Species reactivity	Human
Clonality	Polyclonal
Recommended application	WB, IHC-p, IF, ELISA
Concentration	1 mg/ml
Full name	Adenosine A3-R Antibody
Synonyms	ADORA3; Adenosine receptor A3

This product is for research use only, not for use in human, therapeutic or diagnostic procedure.

Background

ADORA3 encodes a protein (adenosine A3 receptor) that belongs to the family of adenosine receptors, which are G-protein-coupled receptors that are involved in a variety of intracellular signaling pathways and physiological functions. The receptor encoded by this gene mediates a sustained cardioprotective function during cardiac ischemia, it is involved in the inhibition of neutrophil degranulation in neutrophil-mediated tissue injury, it has been implicated in both neuroprotective and neurodegenerative effects, and it may also mediate both cell proliferation and cell death. Alternative splicing results in multiple transcript variants. ADORA3 shares its 5' terminal exon with some transcripts from overlapping GeneID:57413, which encodes an immunoglobulin domain-containing protein.

Recommended Dilution

WB: 1: 500 - 1: 2000

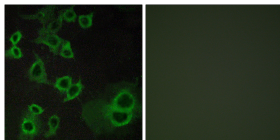
IHC: 1: 100 - 1: 300

IF: 1: 200 - 1: 1000

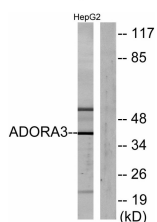
ELISA: 1: 5000

Not yet tested in other applications.

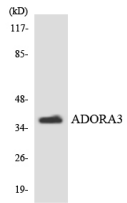
Images



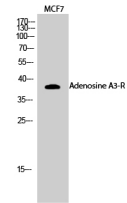
Immunofluorescence analysis of COS7 cells, using ADORA3 Antibody. The picture on the right is blocked with the synthesized peptide.



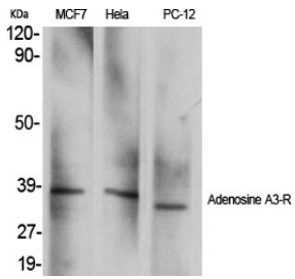
Western blot analysis of lysates from HepG2 cells, using ADORA3 Antibody. The lane on the right is blocked with the synthesized peptide.



Western blot analysis of the lysates from 293 cells using ADORA3 antibody.



Western Blot analysis of MCF7 cells using Adenosine A3-R Polyclonal Antibody



Western Blot analysis of various cells using Adenosine A3-R Polyclonal Antibody

Storage

-20°C for one year

501 Changsheng S Rd, Nanhu Dist, Jiaxing, Zhejiang, China

Tel: 86 21 31007137 | E-mail: save@bt-laboratory.com | www.bt-laboratory.com