

ADH7 Polyclonal Antibody

Description

| | |
|--------------------------------|---------------------------------------------------------------------------------------------------------------------------------------------------------|
| Product type | Primary Antibody |
| Code | BT-AP00269 |
| Host | Rabbit |
| Isotype | IgG |
| Size | 20ul, 50ul, 100ul |
| Immunogen | The antiserum was produced against synthesized peptide derived from human ADH7. AA range:211-260 |
| Mol wt | 40006 |
| Species reactivity | Human, Monkey |
| Clonality | Polyclonal |
| Recommended application | WB, ELISA |
| Concentration | 1 mg/ml |
| Full name | ADH7 Antibody |
| Synonyms | ADH7; Alcohol dehydrogenase class 4 mu/sigma chain; Alcohol dehydrogenase class IV mu/sigma chain; Gastric alcohol dehydrogenase; Retinol dehydrogenase |

This product is for research use only, not for use in human, therapeutic or diagnostic procedure.

Background

ADH7 encodes class IV alcohol dehydrogenase 7 mu or sigma subunit, which is a member of the alcohol dehydrogenase family. Members of this family metabolize a wide variety of substrates, including ethanol, retinol, other aliphatic alcohols, hydroxysteroids, and lipid peroxidation products. The enzyme encoded by ADH7 is inefficient in ethanol oxidation, but is the most active as a retinol dehydrogenase; thus it may participate in the synthesis of retinoic acid, a hormone important for cellular differentiation. The expression of ADH7 is much more abundant in stomach than liver, thus differing from the other known gene family members. Alternative splicing results in multiple transcript variants.

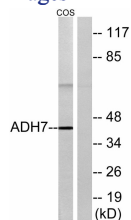
Recommended Dilution

WB: 1: 500 - 1: 2000

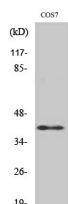
ELISA: 1: 20000

Not yet tested in other applications.

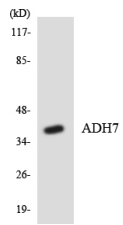
Images



Western blot analysis of lysates from COS7 cells, using ADH7 Antibody. The lane on the right is blocked with the synthesized peptide.



Western Blot analysis of various cells using ADH7 Polyclonal Antibody



Western blot analysis of the lysates from HeLa cells using ADH7 antibody.

Storage

-20°C for one year

501 Changsheng S Rd, Nanhu Dist, Jiaxing, Zhejiang, China

Tel: 86 21 31007137 | E-mail: save@bt-laboratory.com | www.bt-laboratory.com