

## AF-4 Polyclonal Antibody

### Description

<b>Product type</b>	Primary Antibody
<b>Code</b>	BT-AP00284
<b>Host</b>	Rabbit
<b>Isotype</b>	IgG
<b>Size</b>	20ul, 50ul, 100ul
<b>Immunogen</b>	The antiserum was produced against synthesized peptide derived from human AF4. AA range:1-50
<b>Mol wt</b>	131422
<b>Species reactivity</b>	Human, Mouse
<b>Clonality</b>	Polyclonal
<b>Recommended application</b>	IHC-p, WB, ELISA
<b>Concentration</b>	1 mg/ml
<b>Full name</b>	AF-4 Antibody
<b>Synonyms</b>	AFF1; AF4; FEL; MLLT2; PBM1; AF4/FMR2 family member 1; ALL1-fused gene from chromosome 4 protein; Protein AF-4; Protein FEL; Proto-oncogene AF4

**This product is for research use only, not for use in human, therapeutic or diagnostic procedure.**

### Background

AFF1 encodes a member of the AF4/ lymphoid nuclear protein related to AF4/Fragile X E mental retardation syndrome family of proteins, which have been implicated in childhood lymphoblastic leukemia, Fragile X E site mental retardation, and ataxia. It is the prevalent mixed-lineage leukemia fusion gene associated with spontaneous acute lymphoblastic leukemia. Members of this family have three conserved domains: an N-terminal homology domain, an AF4/ lymphoid nuclear protein related to AF4/Fragile X E mental retardation syndrome domain, and a C-terminal homology domain. The protein functions as a regulator of RNA polymerase II-mediated transcription through elongation and chromatin remodeling functions. Through RNA interference screens, AFF1 has been shown to promote the expression of CD133, a plasma membrane glycoprotein required for leukemia cell survival. Alternative splicing results in multiple transcript variants.

### Recommended Dilution

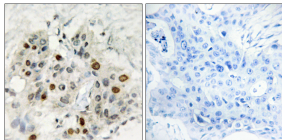
WB: 1: 500 - 2000

ELISA: 1: 20000

IHC: 1: 100 - 1: 300

Not yet tested in other applications.

### Images



Immunohistochemistry analysis of paraffin-embedded human breast carcinoma tissue, using AF4 Antibody. The picture on the right is blocked with the synthesized peptide.

### Storage

-20°C for one year