

## AGR3 Polyclonal Antibody

### Description

<b>Product type</b>	Primary Antibody
<b>Code</b>	BT-AP00293
<b>Host</b>	Rabbit
<b>Isotype</b>	IgG
<b>Size</b>	20ul, 50ul, 100ul
<b>Immunogen</b>	The antiserum was produced against synthesized peptide derived from human AGR3. AA range:1-50
<b>Mol wt</b>	19171
<b>Species reactivity</b>	Human, Mouse
<b>Clonality</b>	Polyclonal
<b>Recommended application</b>	IHC-p, IF, ELISA
<b>Concentration</b>	1 mg/ml
<b>Full name</b>	AGR3 Antibody
<b>Synonyms</b>	AGR3; BCMP11; Anterior gradient protein 3 homolog; AG-3; AG3; hAG-3; Breast cancer membrane protein 11

This product is for research use only, not for use in human, therapeutic or diagnostic procedure.

### Background

AGR3 (Anterior Gradient 3, Protein Disulphide Isomerase Family Member) is a Protein Coding gene. Diseases associated with AGR3 include breast abscess and ritter's disease. GO annotations related to this gene include dystroglycan binding. An important paralog of this gene is TXNDC12. required for calcium-mediated regulation of ciliary beat frequency and mucociliary clearance in the airway. Might be involved in the regulation of intracellular calcium in tracheal epithelial cells.

### Recommended Dilution

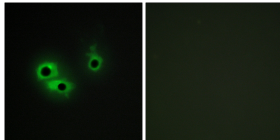
IHC: 1: 100 - 1: 300

IF: 1: 200 - 1: 1000

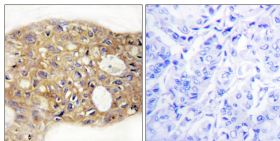
ELISA: 1: 5000

Not yet tested in other applications.

### Images



Immunofluorescence analysis of COS7 cells, using AGR3 Antibody. The picture on the right is blocked with the synthesized peptide.



Immunohistochemistry analysis of paraffin-embedded human breast carcinoma tissue, using AGR3 Antibody. The picture on the right is blocked with the synthesized peptide.

### Storage

-20°C for one year