

Ah Receptor Polyclonal Antibody

Description

Product type	Primary Antibody
Code	BT-AP00300
Host	Rabbit
Isotype	IgG
Size	20ul, 50ul, 100ul
Immunogen	The antiserum was produced against synthesized peptide derived from human AhR. AA range:2-51
Mol wt	96147/76239
Species reactivity	Human, Mouse, Rat
Clonality	Polyclonal
Recommended application	WB, IHC-p, IF, ELISA
Concentration	1 mg/ml
Full name	Ah Receptor Antibody
Synonyms	AHR; BHLHE76; Aryl hydrocarbon receptor; Ah receptor; AhR; Class E basic helix-loop-helix protein 76; bHLHe76; AHRR; BHLHE77; KIAA1234; Aryl hydrocarbon receptor repressor; AhR repressor; AhRR; Class

This product is for research use only, not for use in human, therapeutic or diagnostic procedure.

Background

Aryl hydrocarbon receptor encoded by AHR is a ligand-activated helix-loop-helix transcription factor involved in the regulation of biological responses to planar aromatic hydrocarbons. This receptor has been shown to regulate xenobiotic-metabolizing enzymes such as cytochrome P450. Before ligand binding, the encoded protein is sequestered in the cytoplasm; upon ligand binding, this protein moves to the nucleus and stimulates transcription of target genes.

Recommended Dilution

WB: 1: 500 - 1: 2000

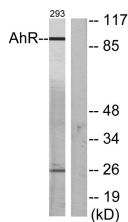
IHC: 1: 100 - 1: 300

IF: 1: 200 - 1: 1000

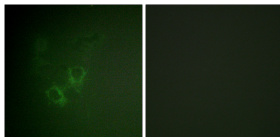
ELISA: 1: 20000

Not yet tested in other applications.

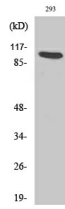
Images



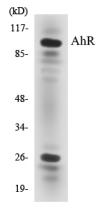
Western blot analysis of lysates from 293 cells, using AhR Antibody. The lane on the right is blocked with the synthesized peptide.



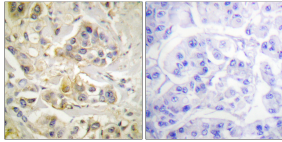
Immunofluorescence analysis of HeLa cells, using AhR Antibody. The picture on the right is blocked with the synthesized peptide.



Western Blot analysis of various cells using Ah Receptor Polyclonal Antibody



Western blot analysis of the lysates from HT-29 cells using AhR antibody.



Immunohistochemistry analysis of paraffin-embedded human breast carcinoma tissue, using AhR Antibody. The picture on the right is blocked with the synthesized peptide.

Storage

-20°C for one year

501 Changsheng S Rd, Nanhu Dist, Jiaxing, Zhejiang, China

Tel: 86 21 31007137 | E-mail: save@bt-laboratory.com | www.bt-laboratory.com