

AI-BP Polyclonal Antibody

Description

Product type	Primary Antibody
Code	BT-AP00303
Host	Rabbit
Isotype	IgG
Size	20ul, 50ul, 100ul
Immunogen	The antiserum was produced against synthesized peptide derived from human AIBP. AA range:121-170
Mol wt	31675
Species reactivity	Human, Mouse, Rat
Clonality	Polyclonal
Recommended application	WB, IF, ELISA
Concentration	1 mg/ml
Full name	AI-BP Antibody
Synonyms	APOA1BP; AIBP; YJEFN1; NAD(P)H-hydrate epimerase; Apolipoprotein A-I-binding protein; AI-BP; NAD(P)HX epimerase; YjeF N-terminal domain-containing protein 1; YjeF_N1

This product is for research use only, not for use in human, therapeutic or diagnostic procedure.

Background

The product (NAD (P)HX epimerase) of NAXE interacts with apolipoprotein A-I (apoA-I), the major apolipoprotein of high-density lipoproteins (HDLs). It is secreted into some bodily fluids, and its synthesis and secretion are stimulated in vitro by incubating cells with apoA-I. The human genome contains related pseudogenes.

Recommended Dilution

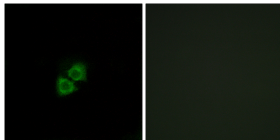
WB: 1: 500 - 1: 2000

IF: 1: 200 - 1: 1000

ELISA: 1: 40000

Not yet tested in other applications.

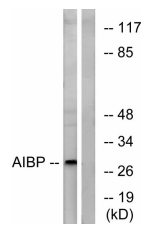
Images



Immunofluorescence analysis of A549 cells, using AIBP Antibody. The picture on the right is blocked with the synthesized peptide.



Western Blot analysis of various cells using AI-BP Polyclonal Antibody diluted at 1:2000



Western blot analysis of lysates from HeLa cells, using AIBP Antibody. The lane on the right is blocked with the synthesized peptide.

Storage

-20°C for one year

501 Changsheng S Rd, Nanhu Dist, Jiaxing, Zhejiang, China

Tel: 86 21 31007137 | E-mail: save@bt-laboratory.com | www.bt-laboratory.com