

AIM2 Polyclonal Antibody

Description

Product type	Primary Antibody
Code	BT-AP00309
Host	Rabbit
Isotype	IgG
Size	20ul, 50ul, 100ul
Immunogen	The antiserum was produced against synthesized peptide derived from human AIM2. AA range:51-100
Mol wt	38954
Species reactivity	Human
Clonality	Polyclonal
Recommended application	WB, IHC-p, IF, ELISA
Concentration	1 mg/ml
Full name	AIM2 Antibody
Synonyms	AIM2; Interferon-inducible protein AIM2; Absent in melanoma 2

This product is for research use only, not for use in human, therapeutic or diagnostic procedure.

Background

AIM2 is a member of the IFI202X /IFI16 family. It plays a putative role in tumorigenic reversion and may control cell proliferation. Interferon-gamma induces expression of AIM2.

Recommended Dilution

WB: 1: 500 - 1: 2000

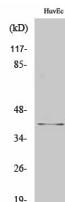
IHC: 1: 100 - 1: 300

IF: 1: 200 - 1: 1000

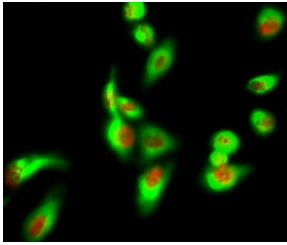
ELISA: 1: 40000

Not yet tested in other applications.

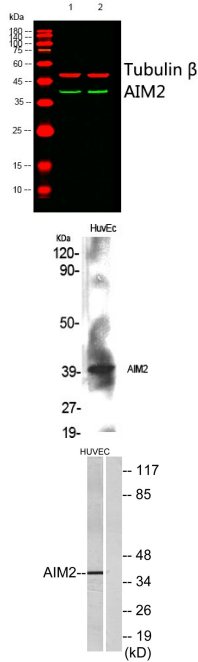
Images



Western Blot analysis of HuvEc cells using AIM2 Polyclonal Antibody cells nucleus.



Immunofluorescence analysis of HeLa cell. 1, AIM2 Polyclonal Antibody (red) was diluted at 1:200 (4° overnight). HSP70 Monoclonal Antibody (3G10) (green) was diluted at 1:200 (4° overnight). 2, Goat Anti Rabbit Alexa Fluor 594 was diluted at 1:1000 (room temperature, 50min). Goat Anti Mouse Alexa Fluor 488 was diluted at 1:1000 (room temperature, 50min).



Western blot analysis of lysates from 1) HuvEc, 2) Jurkat cells, (Green) primary antibody was diluted at 1:1000, 4° over night, Dylight 800 secondary antibody (Immunoway:RS23920) was diluted at 1:10000, 37° 1 hour. (Red) Tubulin β Monoclonal Antibody (5G3) (Immunoway:YM3030) antibody was diluted at 1:5000 as loading control, 4° over night, Dylight 680 secondary antibody (Immunoway:RS23710) was diluted at 1:10000, 37° 1 hour.

Western Blot analysis of various cells using AIM2 Polyclonal Antibody cells nucleus.

Western blot analysis of lysates from HUVEC cells, using AIM2 Antibody. The lane on the right is blocked with the synthesized peptide.

Storage

-20°C for one year

501 Changsheng S Rd, Nanhu Dist, Jiaxing, Zhejiang, China

Tel: 86 21 31007137 | E-mail: save@bt-laboratory.com | www.bt-laboratory.com