

## AIRE-1 Polyclonal Antibody

### Description

Product type	Primary Antibody
Code	BT-AP00311
Host	Rabbit
Isotype	IgG
Size	20ul, 50ul, 100ul
Immunogen	The antiserum was produced against synthesized peptide derived from human AIRE. AA range:126-175
Mol wt	57727
Species reactivity	Human
Clonality	Polyclonal
Recommended application	WB, ELISA
Concentration	1 mg/ml
Full name	AIRE-1 Antibody
Synonyms	AIRE; APECED; Autoimmune regulator; Autoimmune polyendocrinopathy candidiasis ectodermal dystrophy protein; APECED protein

This product is for research use only, not for use in human, therapeutic or diagnostic procedure.

### Background

AIRE encodes a transcriptional regulator that forms nuclear bodies and interacts with the transcriptional coactivator CREB binding protein. The autoimmune regulator plays an important role in immunity by regulating the expression of autoantigens and negative selection of autoreactive T-cells in the thymus. Mutations in this gene cause the rare autosomal-recessive systemic autoimmune disease termed autoimmune polyendocrinopathy with candidiasis and ectodermal dystrophy (APECED).

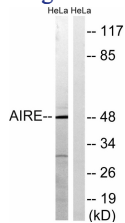
### Recommended Dilution

WB: 1: 500 - 1: 2000

ELISA: 1: 5000

Not yet tested in other applications.

### Images



Western blot analysis of lysates from HeLa cells, treated with Hu 2nM 24h, using AIRE Antibody. The lane on the right is blocked with the synthesized peptide.

### Storage

-20°C for one year