

AKAP 10 Polyclonal Antibody

Description

| | |
|--------------------------------|--|
| Product type | Primary Antibody |
| Code | BT-AP00318 |
| Host | Rabbit |
| Isotype | IgG |
| Size | 20ul, 50ul, 100ul |
| Immunogen | The antiserum was produced against synthesized peptide derived from human AKAP10. AA range:10-59 |
| Mol wt | 73818 |
| Species reactivity | Human, Mouse, Rat |
| Clonality | Polyclonal |
| Recommended application | WB, IHC-p, IF, ELISA |
| Concentration | 1 mg/ml |
| Full name | AKAP 10 Antibody |
| Synonyms | AKAP10; A-kinase anchor protein 10; mitochondrial; AKAP-10; Dual specificity A kinase-anchoring protein 2; D-AKAP-2; Protein kinase A-anchoring protein 10; PRKA10 |

This product is for research use only, not for use in human, therapeutic or diagnostic procedure.

Background

AKAP10 encodes a member of the A-kinase anchor protein family. A-kinase anchor proteins bind to the regulatory subunits of protein kinase A (PKA) and confine the holoenzyme to discrete locations within the cell. The encoded protein is localized to mitochondria and interacts with both the type I and type II regulatory subunits of PKA. Polymorphisms in this gene may be associated with increased risk of arrhythmias and sudden cardiac death.

Recommended Dilution

WB: 1: 500 - 1: 2000

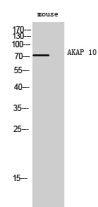
IHC: 1: 100 - 1: 300

IF: 1: 200 - 1: 1000

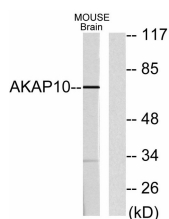
ELISA: 1: 10000

Not yet tested in other applications.

Images



Western Blot analysis of mouse cells using AKAP 10 Polyclonal Antibody



Western blot analysis of lysates from mouse brain, using AKAP10 Antibody. The lane on the right is blocked with the synthesized peptide.

Storage

-20°C for one year

501 Changsheng S Rd, Nanhu Dist, Jiaxing, Zhejiang, China

Tel: 86 21 31007137 | E-mail: save@bt-laboratory.com | www.bt-laboratory.com