

AKAP 14 Polyclonal Antibody

Description

Product type	Primary Antibody
Code	BT-AP00321
Host	Rabbit
Isotype	IgG
Size	20ul, 50ul, 100ul
Immunogen	The antiserum was produced against synthesized peptide derived from human AKAP14. AA range:1-50
Mol wt	22815
Species reactivity	Human
Clonality	Polyclonal
Recommended application	WB, IHC-p, IF, ELISA
Concentration	1 mg/ml
Full name	AKAP 14 Antibody
Synonyms	AKAP14; AKAP28; A-kinase anchor protein 14; AKAP-14; A-kinase anchor protein 28 kDa; AKAP 28; Protein kinase A-anchoring protein 14; PRKA14

This product is for research use only, not for use in human, therapeutic or diagnostic procedure.

Background

The A-kinase anchor proteins (AKAPs) are a group of structurally diverse proteins, which have the common function of binding to the regulatory subunit of protein kinase A (PKA) and confining the holoenzyme to discrete locations within the cell. This gene encodes a member of the AKAP family. The protein anchors PKA in ciliary axonemes and, in this way, may play a role in regulating ciliary beat frequency. Alternate transcriptional splice variants, encoding different isoforms, have been characterized.

Recommended Dilution

WB: 1: 500 - 1: 2000

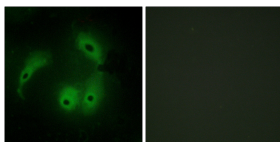
IHC: 1: 100 - 1: 300

IF: 1: 200 - 1: 1000

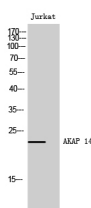
ELISA: 1: 5000

Not yet tested in other applications.

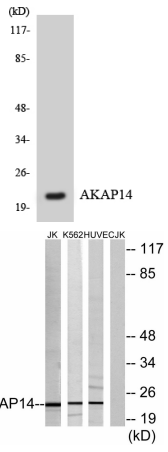
Images



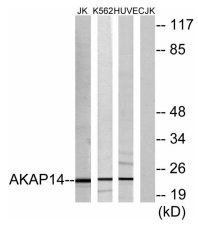
Immunofluorescence analysis of HeLa cells, using AKAP14 Antibody. The picture on the right is blocked with the synthesized peptide.



Western Blot analysis of Jurkat cells using AKAP 14 Polyclonal Antibody



Western blot analysis of the lysates from RAW264.7 cells using AKAP14 antibody.



Western blot analysis of lysates from Jurkat, K562, and HUVEC cells, using AKAP14 Antibody. The lane on the right is blocked with the synthesized peptide.

Storage

-20°C for one year

501 Changsheng S Rd, Nanhu Dist, Jiaxing, Zhejiang, China

Tel: 86 21 31007137 | E-mail: save@bt-laboratory.com | www.bt-laboratory.com