

## AKAP 2 Polyclonal Antibody

### Description

<b>Product type</b>	Primary Antibody
<b>Code</b>	BT-AP00323
<b>Host</b>	Rabbit
<b>Isotype</b>	IgG
<b>Size</b>	20ul, 50ul, 100ul
<b>Immunogen</b>	The antiserum was produced against synthesized peptide derived from human AKAP2. AA range:71-120
<b>Mol wt</b>	96101
<b>Species reactivity</b>	Human
<b>Clonality</b>	Polyclonal
<b>Recommended application</b>	WB, ELISA
<b>Concentration</b>	1 mg/ml
<b>Full name</b>	AKAP 2 Antibody
<b>Synonyms</b>	AKAP2; KIAA0920; PRKA2; A-kinase anchor protein 2; AKAP-2; AKAP-KL; Protein kinase A-anchoring protein 2; PRKA2

This product is for research use only, not for use in human, therapeutic or diagnostic procedure.

### Background

PALM2-AKAP2 mRNAs are naturally occurring read-through products of the neighboring PALM2 and AKAP2 genes. The significance of these read-through mRNAs and the function the resulting fusion protein products have not yet been determined. Alternative splicing of PALM2-AKAP2 results in several transcript variants encoding different isoforms, but the full-length nature of some of these variants has not been defined.

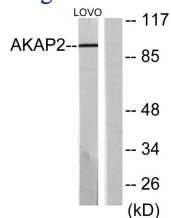
### Recommended Dilution

WB: 1: 500 - 1: 2000

ELISA: 1: 20000

Not yet tested in other applications.

### Images



Western blot analysis of lysates from LOVO cells, using AKAP2 Antibody. The lane on the right is blocked with the synthesized peptide.

### Storage

-20°C for one year