

AKR1A1 Polyclonal Antibody

Description

Product type	Primary Antibody
Code	BT-AP00331
Host	Rabbit
Isotype	IgG
Size	20ul, 50ul, 100ul
Immunogen	Synthesized peptide derived from AKR1A1 . at AA range: 250-330
Mol wt	36573
Species reactivity	Human, Mouse, Rat
Clonality	Polyclonal
Recommended application	WB, ELISA
Concentration	1 mg/ml
Full name	AKR1A1 Antibody
Synonyms	AKR1A1; ALDR1; ALR; Alcohol dehydrogenase [NADP(+)]; Aldehyde reductase; Aldo-keto reductase family 1 member A1

This product is for research use only, not for use in human, therapeutic or diagnostic procedure.

Background

AKR1A1 encodes a member of the aldo/keto reductase superfamily, which consists of more than 40 known enzymes and proteins. This member (aldo-keto reductase family 1 member A1), also known as aldehyde reductase, is involved in the reduction of biogenic and xenobiotic aldehydes and is present in virtually every tissue. Multiple alternatively spliced transcript variants of AKR1A1 exist, all encoding the same protein.

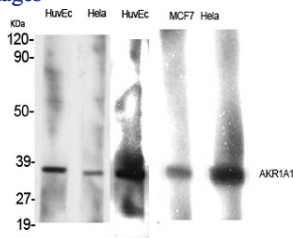
Recommended Dilution

WB: 1: 500 - 1: 2000

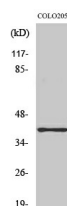
ELISA: 1: 40000

Not yet tested in other applications.

Images



Western Blot analysis of various cells using AKR1A1 Polyclonal Antibody



Western Blot analysis of NIH-3T3 cells using AKR1A1 Polyclonal Antibody

Storage

-20°C for one year

501 Changsheng S Rd, Nanhu Dist, Jiaxing, Zhejiang, China

Tel: 86 21 31007137 | E-mail: save@bt-laboratory.com | www.bt-laboratory.com