

AKR1CL2 Polyclonal Antibody

Description

Product type	Primary Antibody
Code	BT-AP00333
Host	Rabbit
Isotype	IgG
Size	20ul, 50ul, 100ul
Immunogen	The antiserum was produced against synthesized peptide derived from human AKR1CL2. AA range:141-190
Mol wt	36575
Species reactivity	Human
Clonality	Polyclonal
Recommended application	WB, IHC-p, ELISA
Concentration	1 mg/ml
Full name	AKR1CL2 Antibody
Synonyms	AKR1E2; AKR1CL2; AKRDC1; 1; 5-anhydro-D-fructose reductase; AF reductase; Aldo-keto reductase family 1 member C-like protein 2; Aldo-keto reductase family 1 member E2; LoopADR; Testis-specific protein

This product is for research use only, not for use in human, therapeutic or diagnostic procedure.

Background

Aldo-keto reductase family 1 member E2 encoded by AKR1E2 is a member of the aldo-keto reductase superfamily. Members in this family are characterized by their structure (evolutionarily highly conserved TIM barrel) and function (NAD (P)H-dependent oxido-reduction of carbonyl groups). Transcripts of this gene have been reported in specimens of human testis. Alternative splicing results in multiple transcript variants.

Recommended Dilution

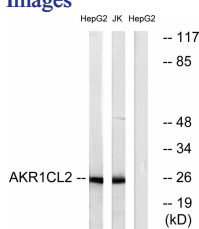
WB: 1: 500 - 1: 2000

IHC: 1: 100 - 1: 300

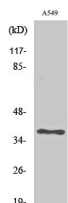
ELISA: 1: 10000

Not yet tested in other applications.

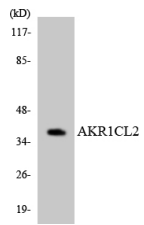
Images



Western blot analysis of lysates from HepG2 and Jurkat cells, using AKR1CL2 Antibody. The lane on the right is blocked with the synthesized peptide.



Western Blot analysis of various cells using AKR1CL2 Polyclonal Antibody diluted at 1:500



Western blot analysis of the lysates from HT-29 cells using AKR1CL2 antibody.

Storage

-20°C for one year

501 Changsheng S Rd, Nanhu Dist, Jiaxing, Zhejiang, China

Tel: 86 21 31007137 | E-mail: save@bt-laboratory.com | www.bt-laboratory.com