

## Akt1 Polyclonal Antibody

### Description

<b>Product type</b>	Primary Antibody
<b>Code</b>	BT-AP00348
<b>Host</b>	Rabbit
<b>Isotype</b>	IgG
<b>Size</b>	20ul, 50ul, 100ul
<b>Immunogen</b>	The antiserum was produced against synthesized peptide derived from human AKT1. AA range:11-60
<b>Mol wt</b>	55686
<b>Species reactivity</b>	Human, Mouse, Rat
<b>Clonality</b>	Polyclonal
<b>Recommended application</b>	WB, IHC-p, ELISA
<b>Concentration</b>	1 mg/ml
<b>Full name</b>	Akt1 Antibody
<b>Synonyms</b>	AKT1; PKB; RAC; RAC-alpha serine/threonine-protein kinase; Protein kinase B; PKB; Protein kinase B alpha; PKB alpha; Proto-oncogene c-Akt; RAC-PK-alpha

**This product is for research use only, not for use in human, therapeutic or diagnostic procedure.**

### Background

The serine-threonine protein kinase encoded by the AKT1 gene is catalytically inactive in serum-starved primary and immortalized fibroblasts. AKT1 and the related AKT2 are activated by platelet-derived growth factor. The activation is rapid and specific, and it is abrogated by mutations in the pleckstrin homology domain of AKT1. It was shown that the activation occurs through phosphatidylinositol 3-kinase. In the developing nervous system AKT is a critical mediator of growth factor-induced neuronal survival. Survival factors can suppress apoptosis in a transcription-independent manner by activating the serine/threonine kinase AKT1, which then phosphorylates and inactivates components of the apoptotic machinery. Mutations in AKT1 have been associated with the Proteus syndrome. Multiple alternatively spliced transcript variants have been found for this gene.

### Recommended Dilution

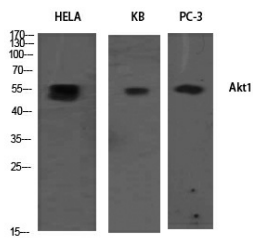
WB: 1: 500 - 1: 2000

IHC: 1: 100 - 1: 300

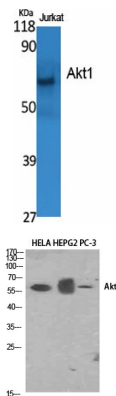
ELISA: 1: 20000

Not yet tested in other applications.

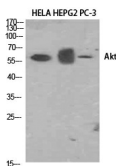
### Images



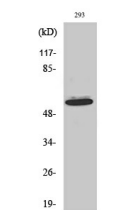
Western Blot analysis of HELA KB PC-3 using Akt1 Polyclonal Antibody. Antibody was diluted at 1:2000



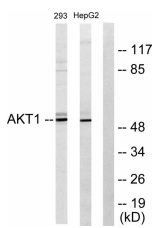
Western Blot analysis of various cells using Akt1 Polyclonal Antibody diluted at 1:2000



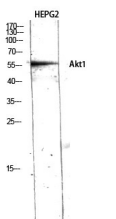
Western Blot analysis of HELA HEPG2 PC-3 using Akt1 Polyclonal Antibody. Antibody was diluted at 1:2000



Western Blot analysis of HepG2 cells using Akt1 Polyclonal Antibody diluted at 1:2000



Western blot analysis of lysates from 293 cells and HepG2 cells, using Akt Antibody. The lane on the right is blocked with the synthesized peptide.



Western Blot analysis of HEPG2 using Akt1 Polyclonal Antibody diluted at 1:2000

## Storage

-20°C for one year

501 Changsheng S Rd, Nanhu Dist, Jiaxing, Zhejiang, China

Tel: 86 21 31007137 | E-mail: [save@bt-laboratory.com](mailto:save@bt-laboratory.com) | [www.bt-laboratory.com](http://www.bt-laboratory.com)