

Akt2 Polyclonal Antibody

Description

Product type	Primary Antibody
Code	BT-AP00351
Host	Rabbit
Isotype	IgG
Size	20ul, 50ul, 100ul
Immunogen	Recombinant Protein of Akt2
Mol wt	55769
Species reactivity	Human, Mouse, Rat
Clonality	Polyclonal
Recommended application	WB, IHC-p
Concentration	1 mg/ml
Full name	Akt2 Antibody
Synonyms	AKT2; RAC-beta serine/threonine-protein kinase; Protein kinase Akt-2; Protein kinase B beta; PKB beta; RAC-PK-beta

This product is for research use only, not for use in human, therapeutic or diagnostic procedure.

Background

AKT2 is a putative oncogene encoding a protein belonging to a subfamily of serine/threonine kinases containing SH2-like (Src homology 2-like) domains. AKT2 was shown to be amplified and overexpressed in 2 of 8 ovarian carcinoma cell lines and 2 of 15 primary ovarian tumors. Overexpression contributes to the malignant phenotype of a subset of human ductal pancreatic cancers. AKT serine/threonine kinase 2 is a general protein kinase capable of phosphorylating several known proteins.

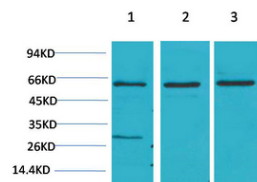
Recommended Dilution

WB: 1: 500 - 1000

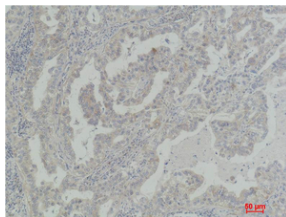
IHC: 1: 100 - 200

Not yet tested in other applications.

Images



Western blot analysis of 1) HeLa, 2) 3T3, 3) PC12 using Akt2 Polyclonal Antibody. Secondary antibody was diluted at 1:20000



Immunohistochemical analysis of paraffin-embedded Human Lung Carcinoma using Akt2 Polyclonal Antibody.

Storage

-20°C for one year

501 Changsheng S Rd, Nanhu Dist, Jiaxing, Zhejiang, China

Tel: 86 21 31007137 | E-mail: save@bt-laboratory.com | www.bt-laboratory.com