

Aladin Polyclonal Antibody

Description

Product type	Primary Antibody
Code	BT-AP00356
Host	Rabbit
Isotype	IgG
Size	20ul, 50ul, 100ul
Immunogen	Synthesized peptide derived from Aladin . at AA range: 360-440
Mol wt	59574
Species reactivity	Human, Rat
Clonality	Polyclonal
Recommended application	WB, ELISA
Concentration	1 mg/ml
Full name	Aladin Antibody
Synonyms	AAAS; ADRACALA; GL003; Aladin; Adracalin

This product is for research use only, not for use in human, therapeutic or diagnostic procedure.

Background

Aladin encoded by AAAS is a member of the WD-repeat family of regulatory proteins and may be involved in normal development of the peripheral and central nervous system. The encoded protein is part of the nuclear pore complex and is anchored there by NDC1. Defects in this gene are a cause of achalasia-addisonianism-alacrima syndrome (AAAS), also called triple-A syndrome or Allgrove syndrome. Two transcript variants encoding different isoforms have been found for this gene.

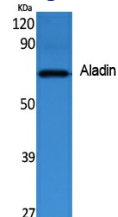
Recommended Dilution

WB: 1: 500 - 1: 2000

ELISA: 1: 40000

Not yet tested in other applications.

Images



Western Blot analysis of extracts from rat kidney, using Aladin Polyclonal Antibody. Secondary antibody was diluted at 1:20000 cells nucleus.

Storage

-20°C for one year