

ALDH1A2 Polyclonal Antibody

Description

Product type	Primary Antibody
Code	BT-AP00359
Host	Rabbit
Isotype	IgG
Size	20ul, 50ul, 100ul
Immunogen	The antiserum was produced against synthesized peptide derived from human ALDH1A2. AA range:412-461
Mol wt	56724
Species reactivity	Human, Mouse, Rat
Clonality	Polyclonal
Recommended application	WB, IHC-p, ELISA
Concentration	1 mg/ml
Full name	ALDH1A2 Antibody
Synonyms	ALDH1A2; RALDH2; Retinal dehydrogenase 2; RALDH 2; RaLDH2; Aldehyde dehydrogenase family 1 member A2; Retinaldehyde-specific dehydrogenase type 2; RALDH(II)

This product is for research use only, not for use in human, therapeutic or diagnostic procedure.

Background

This protein ALDH1A2 belongs to the aldehyde dehydrogenase family of proteins. The product of ALDH1A2 (aldehyde dehydrogenase 1 family member A2) is an enzyme that catalyzes the synthesis of retinoic acid (RA) from retinaldehyde. Retinoic acid, the active derivative of vitamin A (retinol), is a hormonal signaling molecule that functions in developing and adult tissues. The studies of a similar mouse gene suggest that this enzyme and the cytochrome CYP26A1, concurrently establish local embryonic retinoic acid levels which facilitate posterior organ development and prevent spina bifida. Four transcript variants encoding distinct isoforms have been identified for ALDH1A2.

Recommended Dilution

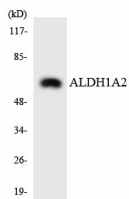
WB: 1: 500 - 1: 2000

ELISA: 1: 20000

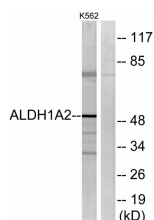
IHC-p: 1: 50 - 300

Not yet tested in other applications.

Images



Western blot analysis of the lysates from COLO205 cells using ALDH1A2 antibody.



Western blot analysis of lysates from K562 cells, using ALDH1A2 Antibody. The lane on the right is blocked with the synthesized peptide.

Storage

-20°C for one year

501 Changsheng S Rd, Nanhu Dist, Jiaxing, Zhejiang, China

Tel: 86 21 31007137 | E-mail: save@bt-laboratory.com | www.bt-laboratory.com