

ALDH3B1 Polyclonal Antibody

Description

| | |
|--------------------------------|--|
| Product type | Primary Antibody |
| Code | BT-AP00363 |
| Host | Rabbit |
| Isotype | IgG |
| Size | 20ul, 50ul, 100ul |
| Immunogen | The antiserum was produced against synthesized peptide derived from human ALDH3B1. AA range:51-100 |
| Mol wt | 51840 |
| Species reactivity | Human |
| Clonality | Polyclonal |
| Recommended application | WB, IHC-p, ELISA |
| Concentration | 1 mg/ml |
| Full name | ALDH3B1 Antibody |
| Synonyms | ALDH3B1; ALDH7; Aldehyde dehydrogenase family 3 member B1; Aldehyde dehydrogenase 7 |

This product is for research use only, not for use in human, therapeutic or diagnostic procedure.

Background

ALDH3B1 encodes a member of the aldehyde dehydrogenase protein family. Aldehyde dehydrogenases are a family of isozymes that may play a major role in the detoxification of aldehydes generated by alcohol metabolism and lipid peroxidation. The encoded protein (aldehyde dehydrogenase 3 family member B1) is able to oxidize long-chain fatty aldehydes in vitro, and may play a role in protection from oxidative stress. Alternative splicing results in multiple transcript variants.

Recommended Dilution

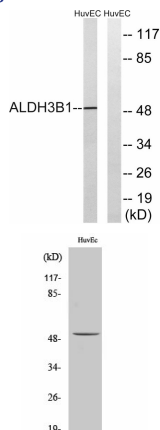
WB: 1: 500 - 1: 2000

IHC: 1: 100 - 1: 300

ELISA: 1: 40000

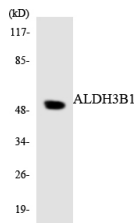
Not yet tested in other applications.

Images

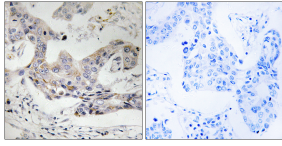


Western blot analysis of lysates from HUVEC cells, using ALDH3B1 Antibody. The lane on the right is blocked with the synthesized peptide.

Western Blot analysis of various cells using ALDH3B1 Polyclonal Antibody diluted at 1:500



Western blot analysis of the lysates from RAW264.7 cells using ALDH3B1 antibody.



Immunohistochemistry analysis of paraffin-embedded human breast carcinoma tissue, using ALDH3B1 Antibody. The picture on the right is blocked with the synthesized peptide.

Storage

-20°C for one year

501 Changsheng S Rd, Nanhu Dist, Jiaxing, Zhejiang, China

Tel: 86 21 31007137 | E-mail: save@bt-laboratory.com | www.bt-laboratory.com