

Aldolase A Polyclonal Antibody

Description

Product type	Primary Antibody
Code	BT-AP00364
Host	Rabbit
Isotype	IgG
Size	20ul, 50ul, 100ul
Immunogen	The antiserum was produced against synthesized peptide derived from human ALDOA. AA range: 1-50
Mol wt	39420
Species reactivity	Human, Mouse, Rat
Clonality	Polyclonal
Recommended application	WB, IF, ELISA
Concentration	1 mg/ml
Full name	Aldolase A Antibody
Synonyms	ALDOA; ALDA; Fructose-bisphosphate aldolase A; Lung cancer antigen NY-LU-1; Muscle-type aldolase

This product is for research use only, not for use in human, therapeutic or diagnostic procedure.

Background

The protein encoded by ALDOA, Aldolase A (fructose-bisphosphate aldolase), is a glycolytic enzyme that catalyzes the reversible conversion of fructose-1,6-bisphosphate to glyceraldehyde 3-phosphate and dihydroxyacetone phosphate. Three aldolase isozymes (A, B, and C), encoded by three different genes, are differentially expressed during development. Aldolase A is found in the developing embryo and is produced in even greater amounts in adult muscle. Aldolase A expression is repressed in adult liver, kidney and intestine and similar to aldolase C levels in brain and other nervous tissue. Aldolase A deficiency has been associated with myopathy and hemolytic anemia. Alternative splicing and alternative promoter usage results in multiple transcript variants. Related pseudogenes have been identified on chromosomes 3 and 10.

Recommended Dilution

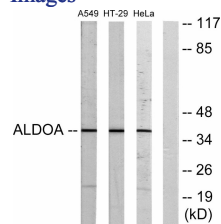
WB: 1: 500 - 1: 2000

IF: 1: 200 - 1: 1000

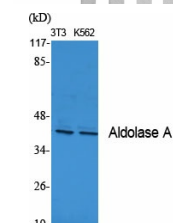
ELISA: 1: 10000

Not yet tested in other applications.

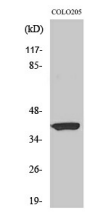
Images



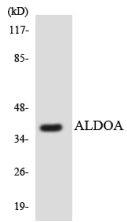
Western blot analysis of lysates from A549, HeLa, and HT-29 cells, using ALDOA Antibody. The lane on the right is blocked with the synthesized peptide.



Western Blot analysis of various cells using Aldolase A Polyclonal Antibody diluted at 1:1000



Western Blot analysis of HT29 cells using Aldolase A Polyclonal Antibody diluted at 1:1000



Western blot analysis of the lysates from HT-29 cells using ALDOA antibody.

Storage

-20°C for one year

501 Changsheng S Rd, Nanhu Dist, Jiaxing, Zhejiang, China

Tel: 86 21 31007137 | E-mail: save@bt-laboratory.com | www.bt-laboratory.com