

AMPK alpha 1(Phospho-Ser485) Rabbit Polyclonal Antibody

Description

Product type	Primary Antibody
Code	BT-AP00381
Host	Rabbit
Isotype	IgG
Size	100ul, 50ul, 20ul
Immunogen	Synthesized phospho peptide around human AMPK α 1 (Ser485)
Mol wt	N/A
Species reactivity	Human, Mouse, Rat
Clonality	Polyclonal
Recommended application	WB
Concentration	1 mg/ml
Full name	AMPKalpha 1
Synonyms	AMPK α 1 (Ser485) ; 5'-AMP-activated protein kinase catalytic subunit alpha-1; AMPK subunit alpha-1; EC 2.7.11.1; Acetyl-CoA carboxylase kinase; ACACA kinase; EC 2.7.11.27; Hydroxymethylglutaryl-CoA reductase kinase; HMGCR kinase; EC 2.7.11.31; Tau-protein kinase PRKAA1; EC 2.7.11.26)

This product is for research use only, not for use in human, therapeutic or diagnostic procedure.

Background

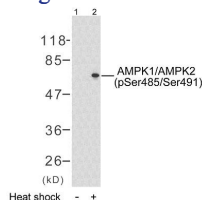
The protein encoded by this gene belongs to the ser/thr protein kinase family. It is the catalytic subunit of the 5'-prime-AMP-activated protein kinase (AMPK). AMPK is a cellular energy sensor conserved in all eukaryotic cells. The kinase activity of AMPK is activated by the stimuli that increase the cellular AMP/ATP ratio. AMPK regulates the activities of a number of key metabolic enzymes through phosphorylation. It protects cells from stresses that cause ATP depletion by switching off ATP-consuming biosynthetic pathways. Alternatively spliced transcript variants encoding distinct isoforms have been observed.

Recommended Dilution

WB: 1: 1000 - 1: 2000

Not yet tested in other applications.

Images



Western blot analysis of lysates from HeLa cells treated with heat shock, using AMPK1 (Phospho-Ser485) Antibody. The lane on the right is blocked with the phospho peptide.

Storage

-20°C for 1 year