

ALS2CR11 Polyclonal Antibody

Description

Product type	Primary Antibody
Code	BT-AP00389
Host	Rabbit
Isotype	IgG
Size	20ul, 50ul, 100ul
Immunogen	The antiserum was produced against synthesized peptide derived from human ALS2CR11. AA range:491-540
Mol wt	71159
Species reactivity	Human
Clonality	Polyclonal
Recommended application	WB, ELISA
Concentration	1 mg/ml
Full name	ALS2CR11 Antibody
Synonyms	ALS2CR11; Amyotrophic lateral sclerosis 2 chromosomal region candidate gene 11 protein

This product is for research use only, not for use in human, therapeutic or diagnostic procedure.

Background

An autosomal recessive form of juvenile amyotrophic lateral sclerosis was originally mapped to a region of chromosome 2 that includes ALS2CR11. myotrophic lateral sclerosis 2 chromosomal region candidate gene 11 protein contains a calcium-dependent membrane targeting C2 domain. This domain is often found in proteins that are involved in membrane trafficking and signal transduction.

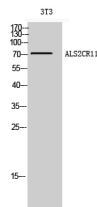
Recommended Dilution

WB: 1: 500 - 1: 2000

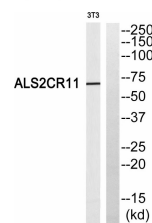
ELISA: 1: 40000

Not yet tested in other applications.

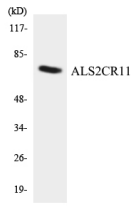
Images



Western Blot analysis of 3T3 cells using ALS2CR11 Polyclonal Antibody



Western blot analysis of ALS2CR11 Antibody. The lane on the right is blocked with the ALS2CR11 peptide.



Western blot analysis of the lysates from COLO205 cells using ALS2CR11 antibody.

Storage

-20°C for one year

501 Changsheng S Rd, Nanhu Dist, Jiaxing, Zhejiang, China

Tel: 86 21 31007137 | E-mail: save@bt-laboratory.com | www.bt-laboratory.com