

## ALS2CR13 Polyclonal Antibody

### Description

<b>Product type</b>	Primary Antibody
<b>Code</b>	BT-AP00390
<b>Host</b>	Rabbit
<b>Isotype</b>	IgG
<b>Size</b>	20ul, 50ul, 100ul
<b>Immunogen</b>	The antiserum was produced against synthesized peptide derived from human ALS2CR13. AA range:411-460
<b>Mol wt</b>	61968
<b>Species reactivity</b>	Human, Mouse
<b>Clonality</b>	Polyclonal
<b>Recommended application</b>	WB, ELISA
<b>Concentration</b>	1 mg/ml
<b>Full name</b>	ALS2CR13 Antibody
<b>Synonyms</b>	FAM117B; ALS2CR13; Protein FAM117B; Amyotrophic lateral sclerosis 2 chromosomal region candidate gene 13 protein

This product is for research use only, not for use in human, therapeutic or diagnostic procedure.

### Background

FAM117B (Family With Sequence Similarity 117 Member B) is a Protein Coding gene. Diseases associated with FAM117B include amyotrophic lateral sclerosis 2, juvenile. An important paralog of this gene is FAM117A.

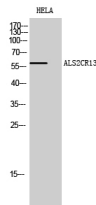
### Recommended Dilution

WB: 1: 500 - 1: 2000

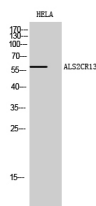
ELISA: 1: 5000

Not yet tested in other applications.

### Images



Western Blot analysis of HELA cells using ALS2CR13 Polyclonal Antibody diluted at 1:500



Western Blot analysis of HELA cells using ALS2CR13 Polyclonal Antibody diluted at 1:500

## Storage

-20°C for one year

501 Changsheng S Rd, Nanhu Dist, Jiaxing, Zhejiang, China

Tel: 86 21 31007137 | E-mail: [save@bt-laboratory.com](mailto:save@bt-laboratory.com) | [www.bt-laboratory.com](http://www.bt-laboratory.com)