

## ALS2CR4 Polyclonal Antibody

### Description

<b>Product type</b>	Primary Antibody
<b>Code</b>	BT-AP00391
<b>Host</b>	Rabbit
<b>Isotype</b>	IgG
<b>Size</b>	20ul, 50ul, 100ul
<b>Immunogen</b>	The antiserum was produced against synthesized peptide derived from human ALS2CR4. AA range:181-230
<b>Mol wt</b>	48244
<b>Species reactivity</b>	Human, Mouse
<b>Clonality</b>	Polyclonal
<b>Recommended application</b>	WB, ELISA
<b>Concentration</b>	1 mg/ml
<b>Full name</b>	ALS2CR4 Antibody
<b>Synonyms</b>	TMEM237; ALS2CR4; Transmembrane protein 237; Amyotrophic lateral sclerosis 2 chromosomal region candidate gene 4 protein

This product is for research use only, not for use in human, therapeutic or diagnostic procedure.

### Background

The protein encoded by TMEM237 (transmembrane protein 237) is a tetraspanin protein that is thought to be involved in WNT signaling. Defects in TMEM237 are a cause of Joubert syndrome-14. Two transcript variants encoding different isoforms have been found for TMEM237.

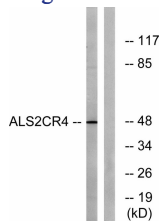
### Recommended Dilution

WB: 1: 500 - 1: 2000

ELISA: 1: 20000

Not yet tested in other applications.

### Images



Western blot analysis of lysates from Jurkat cells, using ALS2CR4 Antibody. The lane on the right is blocked with the synthesized peptide.

### Storage

-20°C for one year