

ALS2CR7 Polyclonal Antibody

Description

| | |
|-------------------------|--|
| Product type | Primary Antibody |
| Code | BT-AP00392 |
| Host | Rabbit |
| Isotype | IgG |
| Size | 20ul, 50ul, 100ul |
| Immunogen | The antiserum was produced against synthesized peptide derived from human AL2S7. AA range:261-310 |
| Mol wt | 43574 |
| Species reactivity | Human, Mouse |
| Clonality | Polyclonal |
| Recommended application | WB, IHC-p, IF, ELISA |
| Concentration | 1 mg/ml |
| Full name | ALS2CR7 Antibody |
| Synonyms | CDK15; ALS2CR7; PFTK2; Cyclin-dependent kinase 15; Amyotrophic lateral sclerosis 2 chromosomal region candidate gene 7 protein; Cell division protein kinase 15; Serine/threonine-protein kinase ALS2CR7 |

This product is for research use only, not for use in human, therapeutic or diagnostic procedure.

Background

CDK15 (Cyclin-Dependent Kinase 15) is a Protein Coding gene. Diseases associated with CDK15 include amyotrophic lateral sclerosis 2, juvenile. GO annotations related to this gene include transferase activity, transferring phosphorus-containing groups and protein tyrosine kinase activity. An important paralog of this gene is CDK14.

Recommended Dilution

WB: 1: 500 - 1: 2000

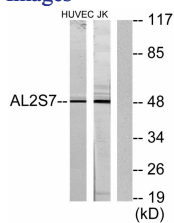
IHC: 1: 100 - 1: 300

IF: 1: 200 - 1: 1000

ELISA: 1: 10000

Not yet tested in other applications.

Images



Western blot analysis of lysates from Jurkat and HUVEC cells, using AL2S7 Antibody. The lane on the right is blocked with the synthesized peptide.

Storage

-20°C for one year