

ALY Polyclonal Antibody

Description

Product type	Primary Antibody
Code	BT-AP00395
Host	Rabbit
Isotype	IgG
Size	20ul, 50ul, 100ul
Immunogen	The antiserum was produced against synthesized peptide derived from human THOC4. AA range:121-170
Mol wt	26888
Species reactivity	Human, Mouse, Rat
Clonality	Polyclonal
Recommended application	WB, ELISA
Concentration	1 mg/ml
Full name	ALY Antibody
Synonyms	ALYREF; ALY; BEF; THOC4; THO complex subunit 4; Tho4; Ally of AML-1 and LEF-1; Aly/REF export factor; Transcriptional coactivator Aly/REF; bZIP-enhancing factor BEF

This product is for research use only, not for use in human, therapeutic or diagnostic procedure.

Background

The Aly/REF export factor encoded by ALYREF is a heat stable, nuclear protein and functions as a molecular chaperone. It is thought to regulate dimerization, DNA binding, and transcriptional activity of basic region-leucine zipper (bZIP) proteins.

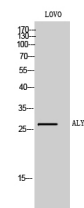
Recommended Dilution

WB: 1: 500 - 1: 2000

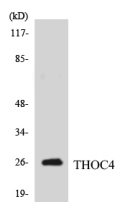
ELISA: 1: 10000

Not yet tested in other applications.

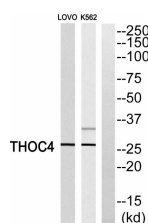
Images



Western Blot analysis of LOVO cells using ALY Polyclonal Antibody



Western blot analysis of the lysates from HepG2 cells using THOC4 antibody.



Western blot analysis of THOC4 Antibody. The lane on the right is blocked with the THOC4 peptide.

Storage

-20°C for one year

501 Changsheng S Rd, Nanhu Dist, Jiaxing, Zhejiang, China

Tel: 86 21 31007137 | E-mail: save@bt-laboratory.com | www.bt-laboratory.com