

CIS Polyclonal Antibody

Description

Product type	Primary Antibody
Code	BT-AP00396
Host	Rabbit
Isotype	IgG
Size	100ul, 50ul, 20ul
Immunogen	Synthetic peptide from human protein at AA range: 30-90
Mol wt	N/A
Species reactivity	Human, Mouse, Rat
Clonality	Polyclonal
Recommended application	IHC-p, IF, ELISA
Concentration	1 mg/ml
Full name	Cytokine-inducible SH2-containing protein
Synonyms	Cytokine-inducible SH2-containing protein; CIS;CIS-1;Protein G18;Suppressor of cytokine signaling;SOCS; Cytokine-inducible SH2-containing protein; CIS; CIS-1; Protein G18; Suppressor of cytokine signaling; SOCS)

This product is for research use only, not for use in human, therapeutic or diagnostic procedure.

Background

The protein encoded by this gene contains a SH2 domain and a SOCS box domain. The protein thus belongs to the cytokine-induced STAT inhibitor (CIS), also known as suppressor of cytokine signaling (SOCS) or STAT-induced STAT inhibitor (SSI), protein family. CIS family members are known to be cytokine-inducible negative regulators of cytokine signaling. The expression of this gene can be induced by IL2, IL3, GM-CSF and EPO in hematopoietic cells. Proteasome-mediated degradation of this protein has been shown to be involved in the inactivation of the erythropoietin receptor. Multiple transcript variants encoding different isoforms have been found for this gene.

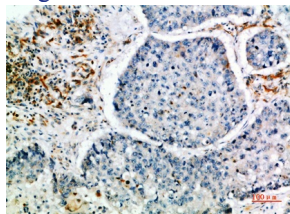
Recommended Dilution

IHC-p: 1: 50 - 1: 200

ELISA: 1: 10000 - 1: 20000

Not yet tested in other applications.

Images



Immunohistochemical analysis of paraffin-embedded human-lung-cancer, antibody was diluted at 1:200

Storage

-20°C for 1 year