

## Ameloblastin Polyclonal Antibody

### Description

<b>Product type</b>	Primary Antibody
<b>Code</b>	BT-AP00401
<b>Host</b>	Rabbit
<b>Isotype</b>	IgG
<b>Size</b>	20ul, 50ul, 100ul
<b>Immunogen</b>	The antiserum was produced against synthesized peptide derived from human Ameloblastin. AA range:275-324
<b>Mol wt</b>	48283
<b>Species reactivity</b>	Human
<b>Clonality</b>	Polyclonal
<b>Recommended application</b>	WB, ELISA
<b>Concentration</b>	1 mg/ml
<b>Full name</b>	Ameloblastin Antibody
<b>Synonyms</b>	AMBN; Ameloblastin

This product is for research use only, not for use in human, therapeutic or diagnostic procedure.

### Background

AMBN encodes the nonamelogenin enamel matrix protein ameloblastin. The ameloblastin may be important in enamel matrix formation and mineralization. This gene is located in the calcium-binding phosphoprotein gene cluster on chromosome 4. Mutations in this gene may be associated with dentinogenesis imperfect and autosomal dominant amylogenesis imperfect.

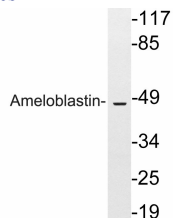
### Recommended Dilution

WB: 1: 500 - 1: 2000

ELISA: 1: 10000

Not yet tested in other applications.

### Images



Western blot analysis of lysates from HeLa cells, using Ameloblastin antibody.

### Storage

-20°C for one year