

## AMPD2 Polyclonal Antibody

### Description

<b>Product type</b>	Primary Antibody
<b>Code</b>	BT-AP00408
<b>Host</b>	Rabbit
<b>Isotype</b>	IgG
<b>Size</b>	20ul, 50ul, 100ul
<b>Immunogen</b>	The antiserum was produced against synthesized peptide derived from human AMPD2. AA range:131-180
<b>Mol wt</b>	100688
<b>Species reactivity</b>	Human, Mouse, Rat
<b>Clonality</b>	Polyclonal
<b>Recommended application</b>	WB, ELISA
<b>Concentration</b>	1 mg/ml
<b>Full name</b>	AMPD2 Antibody
<b>Synonyms</b>	AMPD2; AMP deaminase 2; AMP deaminase isoform L

This product is for research use only, not for use in human, therapeutic or diagnostic procedure.

### Background

Adenosine monophosphate deaminase 2 encoded by AMPD2 is important in purine metabolism by converting AMP to IMP. The encoded protein, which acts as a homotetramer, is one of three AMP deaminases found in mammals. Several transcript variants encoding different isoforms have been found for AMPD2.

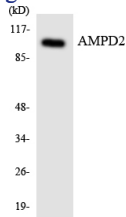
### Recommended Dilution

WB: 1: 500 - 1: 2000

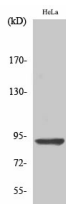
ELISA: 1: 5000

Not yet tested in other applications.

### Images



Western blot analysis of the lysates from HeLa cells using AMPD2 antibody.



Western Blot analysis of various cells using AMPD2 Polyclonal Antibody

### Storage

-20°C for one year

