

Amphiphysin I Polyclonal Antibody

Description

Product type	Primary Antibody
Code	BT-AP00410
Host	Rabbit
Isotype	IgG
Size	20ul, 50ul, 100ul
Immunogen	The antiserum was produced against synthesized peptide derived from human AMPH. AA range:131-180
Mol wt	76257
Species reactivity	Human, Mouse, Rat
Clonality	Polyclonal
Recommended application	WB, ELISA
Concentration	1 mg/ml
Full name	Amphiphysin I Antibody
Synonyms	AMPH; AMPH1; Amphiphysin

This product is for research use only, not for use in human, therapeutic or diagnostic procedure.

Background

AMPH encodes a protein (amphiphysin) associated with the cytoplasmic surface of synaptic vesicles. A subset of patients with stiff-man syndrome who were also affected by breast cancer are positive for autoantibodies against this protein. Alternate splicing of this gene results in two transcript variants encoding different isoforms. Additional splice variants have been described, but their full length sequences have not been determined. A pseudogene of AMPH is found on chromosome 11.

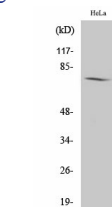
Recommended Dilution

WB: 1: 500 - 1: 2000

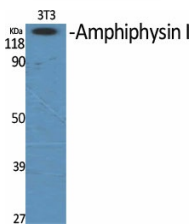
ELISA: 1: 20000

Not yet tested in other applications.

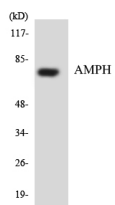
Images



Western Blot analysis of HeLa cells using Amphiphysin I Polyclonal Antibody



Western Blot analysis of various cells using Amphiphysin I Polyclonal Antibody



Western blot analysis of the lysates from HUVEC cells using AMPH antibody.

Storage

-20°C for one year

501 Changsheng S Rd, Nanhu Dist, Jiaxing, Zhejiang, China

Tel: 86 21 31007137 | E-mail: save@bt-laboratory.com | www.bt-laboratory.com