

IGLL5 Rabbit Polyclonal Antibody

Description

Product type	Primary Antibody
Code	BT-AP00417
Host	Rabbit
Isotype	IgG
Size	100ul, 50ul, 20ul
Immunogen	Synthesized peptide derived from human IGLL5
Mol wt	23540
Species reactivity	Human, Rat, Mouse
Clonality	Polyclonal
Recommended application	WB
Concentration	1 mg/ml
Full name	IGLL5
Synonyms	IGLL5; AGM2; CD179; CD179b; IGL5; IGL1; IGLL; Igl11; IGO; IGVPB; Lambda5; VPREB2

This product is for research use only, not for use in human, therapeutic or diagnostic procedure.

Background

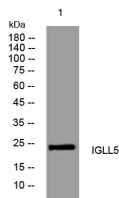
This gene encodes one of the immunoglobulin lambda-like polypeptides. It is located within the immunoglobulin lambda locus but it does not require somatic rearrangement for expression. The first exon of this gene is unrelated to immunoglobulin variable genes; the second and third exons are the immunoglobulin lambda joining 1 and the immunoglobulin lambda constant 1 gene segments. Alternative splicing results in multiple transcript variants.

Recommended Dilution

WB: 1: 500 - 1: 2000

Not yet tested in other applications.

Images



Western blot analysis of lysates from HCT116 cells, primary antibody was diluted at 1:1000, 4°C overnight

Storage

-20°C for 1 year