

AMPK Gamma2 Polyclonal Antibody

Description

Product type	Primary Antibody
Code	BT-AP00424
Host	Rabbit
Isotype	IgG
Size	20ul, 50ul, 100ul
Immunogen	The antiserum was produced against synthesized peptide derived from human PRKAG2. AA range:1-50
Mol wt	63066
Species reactivity	Human, Mouse
Clonality	Polyclonal
Recommended application	WB, IHC-p, IF, ELISA
Concentration	1 mg/ml
Full name	AMPKgamma2 Antibody
Synonyms	PRKAG2; 5'-AMP-activated protein kinase subunit gamma-2; AMPK gamma2; AMPK subunit gamma-2; H91620p

This product is for research use only, not for use in human, therapeutic or diagnostic procedure.

Background

AMP-activated protein kinase (AMPK) is a heterotrimeric protein composed of a catalytic alpha subunit, a noncatalytic beta subunit, and a noncatalytic regulatory gamma subunit. Various forms of each of these subunits exist, encoded by different genes. AMPK is an important energy-sensing enzyme that monitors cellular energy status and functions by inactivating key enzymes involved in regulating de novo biosynthesis of fatty acid and cholesterol. PRKAG2 (protein kinase AMP-activated non-catalytic subunit gamma 2) is a member of the AMPK gamma subunit family. Mutations in this gene have been associated with Wolff-Parkinson-White syndrome, familial hypertrophic cardiomyopathy, and glycogen storage disease of the heart. Alternate transcriptional splice variants, encoding different isoforms, have been characterized.

Recommended Dilution

WB: 1: 500 - 1: 2000

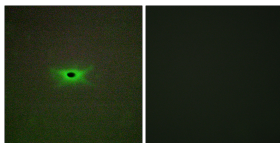
IHC: 1: 100 - 1: 300

IF: 1: 200 - 1: 1000

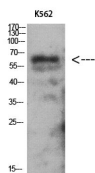
ELISA: 1: 20000

Not yet tested in other applications.

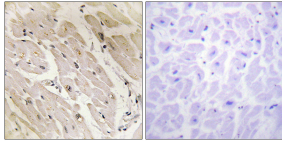
Images



Immunofluorescence analysis of A549 cells, using PRKAG2 Antibody. The picture on the right is blocked with the synthesized peptide.



Western Blot analysis of K562 using Antibody diluted at 1:1000. Secondary antibody was diluted at 1:20000



Immunohistochemistry analysis of paraffin-embedded human heart tissue, using PRKAG2 Antibody.
The picture on the right is blocked with the synthesized peptide.

Storage

-20°C for one year

501 Changsheng S Rd, Nanhu Dist, Jiaxing, Zhejiang, China

Tel: 86 21 31007137 | E-mail: save@bt-laboratory.com | www.bt-laboratory.com