

ANO3 Rabbit Polyclonal Antibody

Description

Product type	Primary Antibody
Code	BT-AP00426
Host	Rabbit
Isotype	IgG
Size	100ul, 50ul, 20ul
Immunogen	Synthesized peptide derived from human ANO3
Mol wt	107910
Species reactivity	Human, Mouse
Clonality	Polyclonal
Recommended application	WB
Concentration	1 mg/ml
Full name	ANO3
Synonyms	ANO3

This product is for research use only, not for use in human, therapeutic or diagnostic procedure.

Background

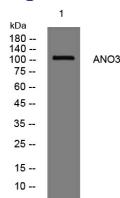
The protein encoded by this gene belongs to the TMEM16 family of predicted membrane proteins, that are also known as anoctamins. While little is known about the function of this gene, mutations in this gene have been associated with some cases of autosomal dominant craniocervical dystonia. Cells from individuals with a mutation in this gene exhibited abnormalities in endoplasmic reticulum-dependent calcium signaling. Studies in rat show that the rat ortholog of this protein interacts with, and modulates the activity of a sodium-activated potassium channel. Deletion of this gene caused increased pain sensitivity in the rat model system. Alternative splicing results in multiple transcript variants encoding different isoforms.

Recommended Dilution

WB: 1: 500 - 1: 2000

Not yet tested in other applications.

Images



Western blot analysis of lysates from Jarkat cells, primary antibody was diluted at 1:1000, 4°C overnight

Storage

-20°C for 1 year