

## Ang-1 Polyclonal Antibody

### Description

Product type	Primary Antibody
Code	BT-AP00440
Host	Rabbit
Isotype	IgG
Size	20ul, 50ul, 100ul
Immunogen	The antiserum was produced against synthesized peptide derived from human Ang-1. AA range:158-207
Mol wt	57513
Species reactivity	Human, Mouse, Rat
Clonality	Polyclonal
Recommended application	WB, ELISA
Concentration	1 mg/ml
Full name	Ang-1 Antibody
Synonyms	ANGPT1; KIAA0003; Angiopoietin-1; ANG-1

This product is for research use only, not for use in human, therapeutic or diagnostic procedure.

### Background

ANGPT1 encodes a secreted glycoprotein that belongs to the angiopoietin family. Members of this family play important roles in vascular development and angiogenesis. All angiopoietins bind with similar affinity to an endothelial cell-specific tyrosine-protein kinase receptor. The angiopoietin 1 encoded by ANGPT1 is a secreted glycoprotein that activates the receptor by inducing its tyrosine phosphorylation. It plays a critical role in mediating reciprocal interactions between the endothelium and surrounding matrix and mesenchyme and inhibits endothelial permeability. The protein also contributes to blood vessel maturation and stability, and may be involved in early development of the heart. Alternative splicing results in multiple transcript variants encoding distinct isoforms.

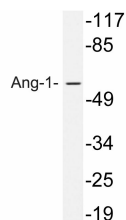
### Recommended Dilution

WB: 1: 500 - 1: 2000

ELISA: 1: 10000

Not yet tested in other applications.

### Images



Western blot analysis of lysate from HeLa cells, using Ang-1 antibody.

### Storage

-20°C for one year