

ANKRD30A Polyclonal Antibody

Description

Product type	Primary Antibody
Code	BT-AP00453
Host	Rabbit
Isotype	IgG
Size	20ul, 50ul, 100ul
Immunogen	The antiserum was produced against synthesized peptide derived from human AN30A. AA range:1041-1090
Mol wt	152674
Species reactivity	Human
Clonality	Polyclonal
Recommended application	WB, IHC-p, ELISA
Concentration	1 mg/ml
Full name	ANKRD30A Antibody
Synonyms	ANKRD30A; Ankyrin repeat domain-containing protein 30A; Serologically defined breast cancer antigen NY-BR-1

This product is for research use only, not for use in human, therapeutic or diagnostic procedure.

Background

Ankyrins are membrane adaptor molecules that play important roles in coupling integral membrane proteins to the spectrin-based cytoskeleton network. Mutations of ankyrin genes lead to severe genetic diseases, such as fatal cardiac arrhythmias and hereditary spherocytosis. ANKRD30A (ankyrin repeat domain 30A), also known as serologically defined breast cancer antigen NY-BR-1, is a 1,397 amino acid coiled-coil protein. Containing six ANK repeats and thirty-seven exons, ANKRD30A is a distant homolog of the POTE family. Initiated by either Dnmt1 or Met-57, ANKRD30A is highly expressed in breast and testis, and faintly in placenta. Present in 80% of breast cancers, but not in other types of tumors, ANKRD30A is a differentiation antigen and a potential target for antibody-based therapies in breast cancers.

Recommended Dilution

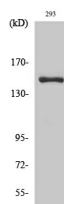
WB: 1: 500 - 1: 2000

IHC: 1: 100 - 1: 300

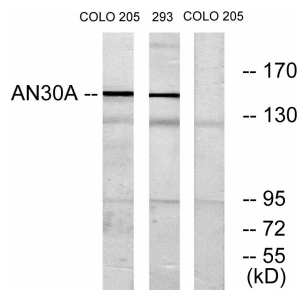
ELISA: 1: 5000

Not yet tested in other applications.

Images



Western Blot analysis of various cells using ANKRD30A Polyclonal Antibody diluted at 1:2000 cells nucleus.



Western blot analysis of lysates from 293 and COLO cells, using AN30A Antibody. The lane on the right is blocked with the synthesized peptide.

Storage

-20°C for one year

501 Changsheng S Rd, Nanhu Dist, Jiaxing, Zhejiang, China

Tel: 86 21 31007137 | E-mail: save@bt-laboratory.com | www.bt-laboratory.com