

Annexin I Polyclonal Antibody

Description

Product type	Primary Antibody
Code	BT-AP00458
Host	Rabbit
Isotype	IgG
Size	20ul, 50ul, 100ul
Immunogen	The antiserum was produced against synthesized peptide derived from human Annexin I. AA range:97-146
Mol wt	38714
Species reactivity	Human, Mouse, Rat
Clonality	Polyclonal
Recommended application	WB, IHC-p, ELISA
Concentration	1 mg/ml
Full name	Annexin I Antibody
Synonyms	ANXA1; ANX1; LPC1; Annexin A1; Annexin I; Annexin-1; Calpactin II; Calpactin-2; Chromobindin-9; Lipocortin I; Phospholipase A2 inhibitory protein; p35

This product is for research use only, not for use in human, therapeutic or diagnostic procedure.

Background

ANXA1 encodes a membrane-localized protein that binds phospholipids. This protein (annexin A1) inhibits phospholipase A2 and has anti-inflammatory activity. Loss of function or expression of ANXA1 has been detected in multiple tumors.

Recommended Dilution

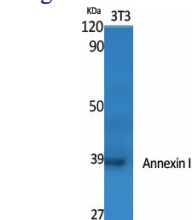
WB: 1: 500 - 1: 2000

ELISA: 1: 20000

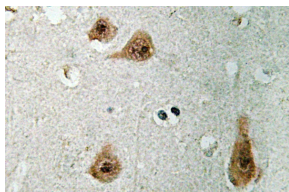
IHC-p: 1: 50 - 300

Not yet tested in other applications.

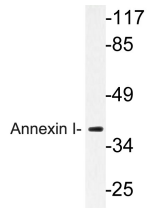
Images



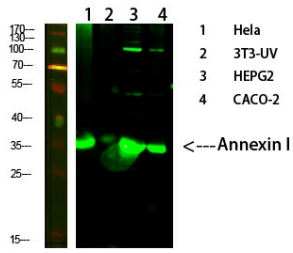
Western Blot analysis of various cells using Annexin I Polyclonal Antibody diluted at 1:2000



Immunohistochemistry analysis of Annexin I antibody in paraffin-embedded human brain tissue.

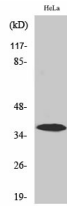


Western blot analysis of lysate from HeLa cells, using Annexin I antibody.



Western Blot analysis of various cells using primary antibody diluted at 1:1000(4°C overnight).

Secondary antibody:Goat Anti-rabbit IgG IRDye 800(diluted at 1:5000, 25°C, 1 hour).



Western Blot analysis of HeLa cells using Annexin I Polyclonal Antibody diluted at 1:2000

Storage

-20°C for one year

501 Changsheng S Rd, Nanhu Dist, Jiaxing, Zhejiang, China

Tel: 86 21 31007137 | E-mail: save@bt-laboratory.com | www.bt-laboratory.com