

Annexin II Polyclonal Antibody

Description

Product type	Primary Antibody
Code	BT-AP00460
Host	Rabbit
Isotype	IgG
Size	20ul, 50ul, 100ul
Immunogen	The antiserum was produced against synthesized peptide derived from human Annexin II. AA range:88-137
Mol wt	38604
Species reactivity	Human, Mouse, Rat
Clonality	Polyclonal
Recommended application	WB, IHC-p, ELISA
Concentration	1 mg/ml
Full name	Annexin II Antibody
Synonyms	ANXA2; ANX2; ANX2L4; CAL1H; LPC2D; Annexin A2; Annexin II; Annexin-2; Calpactin I heavy chain; Calpactin-1 heavy chain; Chromobindin-8; Lipocortin II; Placental anticoagulant protein IV; PAP-IV; Prote

This product is for research use only, not for use in human, therapeutic or diagnostic procedure.

Background

ANXA2 encodes a member of the annexin family. Members of this calcium-dependent phospholipid-binding protein family play a role in the regulation of cellular growth and in signal transduction pathways. This protein functions as an autocrine factor which heightens osteoclast formation and bone resorption. ANXA2 has three pseudogenes located on chromosomes 4, 9 and 10, respectively. Multiple alternatively spliced transcript variants encoding different isoforms have been found for this gene.

Recommended Dilution

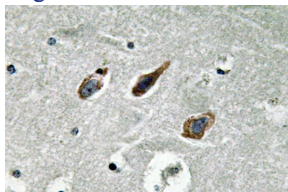
WB: 1: 500 - 1: 2000

IHC: 1: 100 - 1: 300

ELISA: 1: 10000

Not yet tested in other applications.

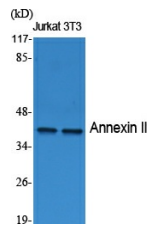
Images



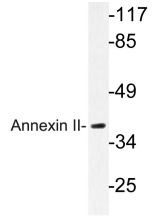
Immunohistochemistry analysis of Annexin II antibody in paraffin-embedded human brain tissue.



Western Blot analysis of HeLa cells using Annexin II Polyclonal Antibody diluted at 1:2000



Western Blot analysis of various cells using Annexin II Polyclonal Antibody diluted at 1:2000



Western blot analysis of lysate from HeLa cells, using Annexin II antibody.

Storage

-20°C for one year

501 Changsheng S Rd, Nanhu Dist, Jiaxing, Zhejiang, China

Tel: 86 21 31007137 | E-mail: save@bt-laboratory.com | www.bt-laboratory.com