

Annexin VI Polyclonal Antibody

Description

Product type	Primary Antibody
Code	BT-AP00462
Host	Rabbit
Isotype	IgG
Size	20ul, 50ul, 100ul
Immunogen	The antiserum was produced against synthesized peptide derived from human Annexin A6. AA range:1-50
Mol wt	75873
Species reactivity	Human
Clonality	Polyclonal
Recommended application	WB, IHC-p, IF, ELISA
Concentration	1 mg/ml
Full name	Annexin VI Antibody
Synonyms	ANXA6; ANX6; Annexin A6; 67 kDa calelectrin; Annexin VI; Annexin-6; Calphobindin-II; CPB-II; Chromobindin-20; Lipocortin VI; Protein III; p68; p70

This product is for research use only, not for use in human, therapeutic or diagnostic procedure.

Background

Annexin VI belongs to a family of calcium-dependent membrane and phospholipid binding proteins. Several members of the annexin family have been implicated in membrane-related events along exocytotic and endocytotic pathways. The annexin VI gene is approximately 60 kbp long and contains 26 exons. It encodes a protein of about 68 kDa that consists of eight 68-amino acid repeats separated by linking sequences of variable lengths. It is highly similar to human annexins I and II sequences, each of which contain four such repeats. Annexin VI has been implicated in mediating the endosome aggregation and vesicle fusion in secreting epithelia during exocytosis. Alternatively spliced transcript variants have been described.

Recommended Dilution

WB: 1: 500 - 1: 2000

IHC: 1: 100 - 1: 300

IF: 1: 200 - 1: 1000

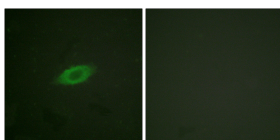
ELISA: 1: 10000

Not yet tested in other applications.

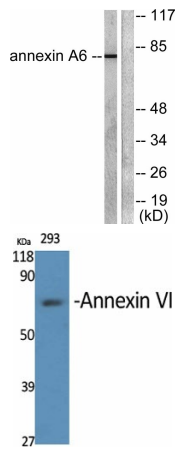
Images



Western Blot analysis of 293 cells using Annexin VI Polyclonal Antibody diluted at 1:2000

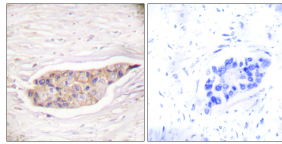


Immunofluorescence analysis of HeLa cells, using Annexin A6 Antibody. The picture on the right is blocked with the synthesized peptide.

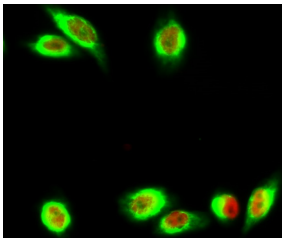


Western blot analysis of lysates from 293 cells, using Annexin A6 Antibody. The lane on the right is blocked with the synthesized peptide.

Western Blot analysis of various cells using Annexin VI Polyclonal Antibody diluted at 1:2000



Immunohistochemistry analysis of paraffin-embedded human breast carcinoma tissue, using Annexin A6 Antibody. The picture on the right is blocked with the synthesized peptide.



Immunofluorescence analysis of HeLa cell. 1, Annexin VI Polyclonal Antibody (green) was diluted at 1:200 (4° overnight). (red) was diluted at 1:200 (4° overnight). 2, Goat Anti Rabbit Alexa Fluor 488 was diluted at 1:1000 (room temperature, 50min). Goat Anti Mouse Alexa Fluor 594 was diluted at 1:1000 (room temperature, 50min).

Storage

-20°C for one year

501 Changsheng S Rd, Nanhu Dist, Jiaxing, Zhejiang, China

Tel: 86 21 31007137 | E-mail: save@bt-laboratory.com | www.bt-laboratory.com