

Annexin X Polyclonal Antibody

Description

Product type	Primary Antibody
Code	BT-AP00464
Host	Rabbit
Isotype	IgG
Size	20ul, 50ul, 100ul
Immunogen	The antiserum was produced against synthesized peptide derived from human ANXA10. AA range:261-310
Mol wt	37278
Species reactivity	Human, Mouse
Clonality	Polyclonal
Recommended application	WB, ELISA
Concentration	1 mg/ml
Full name	Annexin X Antibody
Synonyms	ANXA10; ANX14; Annexin A10; Annexin-10; Annexin-14

This product is for research use only, not for use in human, therapeutic or diagnostic procedure.

Background

ANXA10 encodes a member (annexin A10) of the annexin family. Members of this calcium-dependent phospholipid-binding protein family play a role in the regulation of cellular growth and in signal transduction pathways. The function of ANXA10 has not yet been determined.

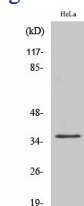
Recommended Dilution

WB: 1: 500 - 1: 2000

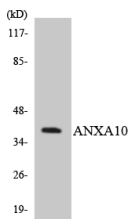
ELISA: 1: 20000

Not yet tested in other applications.

Images



Western Blot analysis of various cells using Annexin X Polyclonal Antibody



Western blot analysis of the lysates from Jurkat cells using ANXA10 antibody.

Storage

-20°C for one year