

AP2M1(Phospho-Thr156) Rabbit Polyclonal Antibody

Description

Product type	Primary Antibody
Code	BT-AP00467
Host	Rabbit
Isotype	IgG
Size	100ul, 50ul, 20ul
Immunogen	Synthesized phospho peptide around human AP2M1 (Thr156)
Mol wt	N/A
Species reactivity	Human, Rat, Mouse
Clonality	Polyclonal
Recommended application	WB
Concentration	1 mg/ml
Full name	AP2M1
Synonyms	AP2M1; Ap2m1; Adaptin mu 1; AP50; CLAPM1; AP-2 complex subunit mu; AP-2 mu chain; Adapter-related protein complex 2 mu subunit; Adaptin-mu2; Adaptor protein complex AP-2 subunit mu; Clathrin assembly protein complex 2 medium chain; Clathrin coat assembly protein AP50; Clathrin coat-associated protein AP50; HA2 50 kDa subunit; Plasma membrane adaptor AP-2 50 kDa protein)

This product is for research use only, not for use in human, therapeutic or diagnostic procedure.

Background

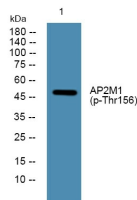
This gene encodes a subunit of the heterotetrameric coat assembly protein complex 2 (AP2), which belongs to the adaptor complexes medium subunits family. The encoded protein is required for the activity of a vacuolar ATPase, which is responsible for proton pumping occurring in the acidification of endosomes and lysosomes. The encoded protein may also play an important role in regulating the intracellular trafficking and function of CTLA-4 protein. Three transcript variants encoding different isoforms have been found for this gene.

Recommended Dilution

WB: 1: 1000 - 1: 2000

Not yet tested in other applications.

Images



Western blot analysis of lysates from K562 cells, primary antibody was diluted at 1:1000, 4°C overnight

Storage

-20°C for 1 year